

ARG55013 anti-WDR3 antibody

Package: 100 µl
Store at: -20°C

Summary

Product Description	Rabbit Polyclonal antibody recognizes WDR3
Tested Reactivity	Hu
Tested Application	FACS, WB
Host	Rabbit
Clonality	Polyclonal
Isotype	IgG
Target Name	WDR3
Species	Human
Immunogen	KLH-conjugated synthetic peptide corresponding to aa. 208-236 (N-terminus) of Human WDR3.
Conjugation	Un-conjugated
Alternate Names	UTP12; DIP2; WD repeat-containing protein 3

Application Instructions

Application table	Application	Dilution
	FACS	1:10 - 1:50
	WB	1:1000
Application Note	* The dilutions indicate recommended starting dilutions and the optimal dilutions or concentrations should be determined by the scientist.	
Positive Control	K562	

Properties

Form	Liquid
Purification	Purification with Protein A and immunogen peptide.
Buffer	PBS and 0.09% (W/V) Sodium azide
Preservative	0.09% (W/V) Sodium azide
Storage instruction	For continuous use, store undiluted antibody at 2-8°C for up to a week. For long-term storage, aliquot and store at -20°C or below. Storage in frost free freezers is not recommended. Avoid repeated freeze/thaw cycles. Suggest spin the vial prior to opening. The antibody solution should be gently mixed before use.
Note	For laboratory research only, not for drug, diagnostic or other use.

Bioinformation

Database links [GeneID: 10885 Human](#)
[Swiss-port # Q9UNX4 Human](#)

Gene Symbol WDR3

Gene Full Name WD repeat domain 3

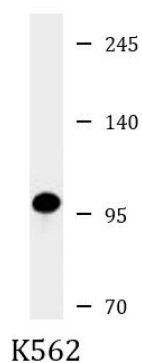
Background This gene encodes a nuclear protein containing 10 WD repeats. WD repeats are approximately 30- to 40-amino acid domains containing several conserved residues, which usually include a trp-asn at the C-terminal end. Proteins belonging to the WD repeat family are involved in a variety of cellular processes, including cell cycle progression, signal transduction, apoptosis, and gene regulation. [provided by RefSeq, Jul 2008]

Research Area Cell Biology and Cellular Response antibody; Gene Regulation antibody

Calculated Mw 106 kDa

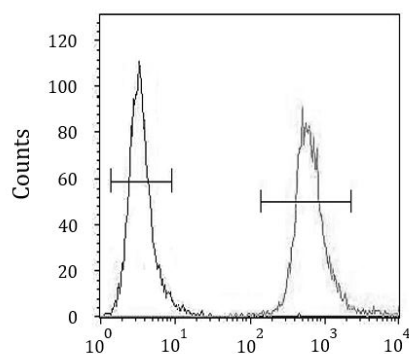
Cellular Localization Nucleus, nucleolus

Images



ARG55013 anti-WDR3 antibody WB image

Western blot: 35 µg of K562 cell lysate stained with ARG55013 anti-WDR3 antibody.



ARG55013 anti-WDR3 antibody FACS image

Flow Cytometry: HeLa cells stained with ARG55013 anti-WDR3 antibody (right histogram) or without primary antibody control (left histogram), followed by incubation with FITC labelled secondary antibody.