

ARG55014
anti-WDR43 antibodyPackage: 100 µl
Store at: -20°C

Summary

Product Description	Rabbit Polyclonal antibody recognizes WDR43
Tested Reactivity	Hu
Tested Application	FACS, IHC-P, WB
Host	Rabbit
Clonality	Polyclonal
Isotype	IgG
Target Name	WDR43
Species	Human
Immunogen	KLH-conjugated synthetic peptide corresponding to aa. 636-665 (C-terminus) of Human WDR43.
Conjugation	Un-conjugated
Alternate Names	NET12; UTP5; WD repeat-containing protein 43

Application Instructions

Application table	Application	Dilution
	FACS	1:10 - 1:50
	IHC-P	Assay-dependent
	WB	1:1000
Application Note	* The dilutions indicate recommended starting dilutions and the optimal dilutions or concentrations should be determined by the scientist.	
Positive Control	HepG2	

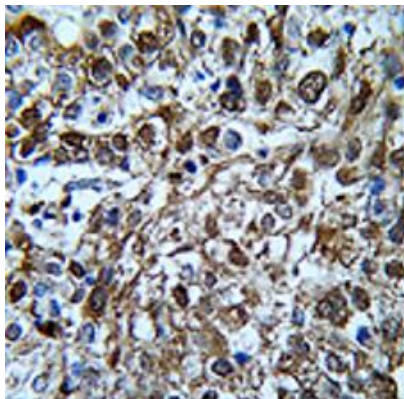
Properties

Form	Liquid
Purification	Purification with Protein A and immunogen peptide.
Buffer	PBS and 0.09% (W/V) Sodium azide
Preservative	0.09% (W/V) Sodium azide
Storage instruction	For continuous use, store undiluted antibody at 2-8°C for up to a week. For long-term storage, aliquot and store at -20°C or below. Storage in frost free freezers is not recommended. Avoid repeated freeze/thaw cycles. Suggest spin the vial prior to opening. The antibody solution should be gently mixed before use.
Note	For laboratory research only, not for drug, diagnostic or other use.

Bioinformation

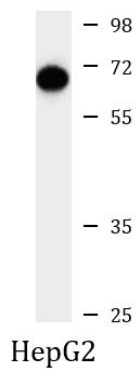
Database links	GeneID: 23160 Human Swiss-port # Q15061 Human
Gene Symbol	WDR43
Gene Full Name	WD repeat domain 43
Research Area	Cell Biology and Cellular Response antibody; Gene Regulation antibody
Calculated Mw	75 kDa
Cellular Localization	Nucleus, nucleolus

Images



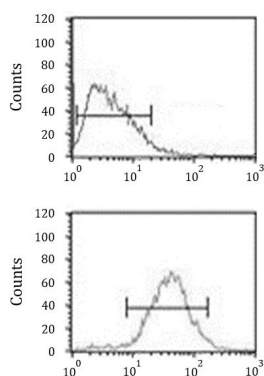
ARG55014 anti-WDR43 antibody IHC-P image

Immunohistochemistry: Formalin-fixed and paraffin-embedded Human cervix carcinoma stained with ARG55014 anti-WDR43 antibody.



ARG55014 anti-WDR43 antibody WB image

Western blot: 35 µg of HepG2 cell lysate stained with ARG55014 anti-WDR43 antibody.



ARG55014 anti-WDR43 antibody FACS image

Flow Cytometry: HepG2 cells stained with ARG55014 anti-WDR43 antibody (bottom histogram) or without primary antibody control (top histogram), followed by incubation with FITC labelled secondary antibody.