

ARG55016 anti-WDR5B antibody

Package: 100 µl
Store at: -20°C

Summary

Product Description	Rabbit Polyclonal antibody recognizes WDR5B
Tested Reactivity	Hu
Tested Application	FACS, WB
Host	Rabbit
Clonality	Polyclonal
Isotype	IgG
Target Name	WDR5B
Species	Human
Immunogen	KLH-conjugated synthetic peptide corresponding to aa. 58-85 (N-terminus) of Human WDR5B.
Conjugation	Un-conjugated
Alternate Names	WD repeat-containing protein 5B

Application Instructions

Application table	Application	Dilution
	FACS	1:10 - 1:50
	WB	1:1000
Application Note	* The dilutions indicate recommended starting dilutions and the optimal dilutions or concentrations should be determined by the scientist.	
Positive Control	WiDr	

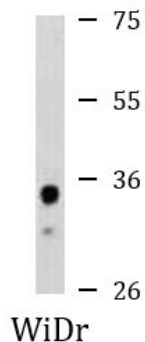
Properties

Form	Liquid
Purification	Purification with Protein A and immunogen peptide.
Buffer	PBS and 0.09% (W/V) Sodium azide
Preservative	0.09% (W/V) Sodium azide
Storage instruction	For continuous use, store undiluted antibody at 2-8°C for up to a week. For long-term storage, aliquot and store at -20°C or below. Storage in frost free freezers is not recommended. Avoid repeated freeze/thaw cycles. Suggest spin the vial prior to opening. The antibody solution should be gently mixed before use.
Note	For laboratory research only, not for drug, diagnostic or other use.

Bioinformation

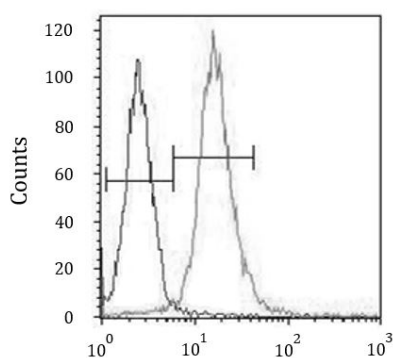
Database links	GeneID: 54554 Human Swiss-port # Q86VZ2 Human
Gene Symbol	WDR5B
Gene Full Name	WD repeat domain 5B
Background	This intronless gene encodes a protein containing several WD40 repeats. WD repeats are approximately 30- to 40-amino acid domains containing several conserved residues, including a trp-asp at the C-terminal end. The encoded protein may mediate protein-protein interactions. [provided by RefSeq, Jul 2008]
Function	May function as a substrate receptor for CUL4-DDB1 ubiquitin E3 ligase complex. [UniProt]
Research Area	Gene Regulation antibody
Calculated Mw	36 kDa

Images



ARG55016 anti-WDR5B antibody WB image

Western blot: 35 µg of WiDr cell lysate stained with ARG55016 anti-WDR5B antibody.



ARG55016 anti-WDR5B antibody FACS image

Flow Cytometry: WiDr cells stained with ARG55016 anti-WDR5B antibody (right histogram) or without primary antibody control (left histogram), followed by incubation with FITC labelled secondary antibody.