

ARG55018 anti-WIBG antibody

Package: 100 µl
Store at: -20°C

Summary

Product Description	Rabbit Polyclonal antibody recognizes WIBG
Tested Reactivity	Hu
Predict Reactivity	Ms, Bov
Tested Application	IHC-P, WB
Host	Rabbit
Clonality	Polyclonal
Isotype	IgG
Target Name	WIBG
Species	Human
Immunogen	KLH-conjugated synthetic peptide corresponding to aa. 12-40 (N-terminus) of Human WIBG.
Conjugation	Un-conjugated
Alternate Names	WIBG; Partner of Y14 and mago; PYM; Protein wibg homolog

Application Instructions

Application table	Application	Dilution
	IHC-P	Assay-dependent
	WB	1:1000
Application Note	* The dilutions indicate recommended starting dilutions and the optimal dilutions or concentrations should be determined by the scientist.	
Positive Control	U-251MG	

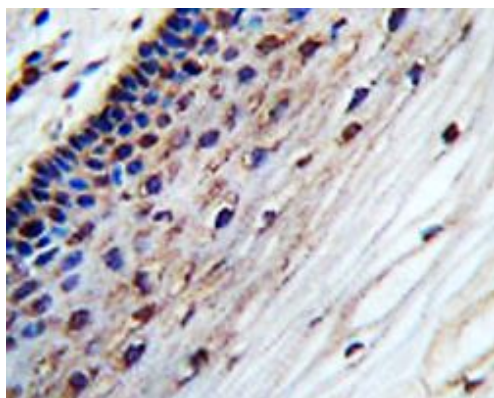
Properties

Form	Liquid
Purification	Purification with Protein A and immunogen peptide.
Buffer	PBS and 0.09% (W/V) Sodium azide
Preservative	0.09% (W/V) Sodium azide
Storage instruction	For continuous use, store undiluted antibody at 2-8°C for up to a week. For long-term storage, aliquot and store at -20°C or below. Storage in frost free freezers is not recommended. Avoid repeated freeze/thaw cycles. Suggest spin the vial prior to opening. The antibody solution should be gently mixed before use.
Note	For laboratory research only, not for drug, diagnostic or other use.

Bioinformation

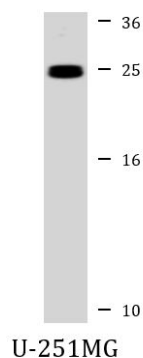
Database links	GeneID: 84305 Human Swiss-port # Q9BRP8 Human
Gene Symbol	WIBG
Gene Full Name	within bgcn homolog (Drosophila)
Function	Key regulator of the exon junction complex (EJC), a multiprotein complex that associates immediately upstream of the exon-exon junction on mRNAs and serves as a positional landmarks for the intron exon structure of genes and directs post-transcriptional processes in the cytoplasm such as mRNA export, nonsense-mediated mRNA decay (NMD) or translation. Acts as a EJC disassembly factor, allowing translation-dependent EJC removal and recycling by disrupting mature EJC from spliced mRNAs. Its association with the 40S ribosomal subunit probably prevents a translation-independent disassembly of the EJC from spliced mRNAs, by restricting its activity to mRNAs that have been translated. Interferes with NMD and enhances translation of spliced mRNAs, probably by antagonizing EJC functions. May bind RNA; the relevance of RNA-binding remains unclear in vivo, RNA-binding was detected by PubMed:14968132, while PubMed:19410547 did not detect RNA-binding activity independently of the EJC. [UniProt]
Research Area	Gene Regulation antibody
Calculated Mw	23 kDa
Cellular Localization	Cytoplasm. Nucleus, nucleolus. Nucleus, nucleoplasm. Note=Shuttles between the nucleus and the cytoplasm Nuclear export is mediated by XPO1/CRM1

Images



ARG55018 anti-WIBG antibody IHC-P image

Immunohistochemistry: Formalin-fixed and paraffin-embedded Human cervical tissue stained with ARG55018 anti-WIBG antibody.



ARG55018 anti-WIBG antibody WB image

Western blot: 35 µg of U-251MG cell lysate stained with ARG55018 anti-WIBG antibody at 1:1000 dilution.