

ARG55019
anti-WSB2 antibodyPackage: 100 µl
Store at: -20°C

Summary

Product Description	Rabbit Polyclonal antibody recognizes WSB2
Tested Reactivity	Hu
Predict Reactivity	Ms, Bov
Tested Application	WB
Host	Rabbit
Clonality	Polyclonal
Isotype	IgG
Target Name	WSB2
Species	Human
Immunogen	KLH-conjugated synthetic peptide corresponding to aa. 375-404 (C-terminus) of Human WSB2.
Conjugation	Un-conjugated
Alternate Names	WSB-2; CS box-containing WD protein; WD repeat and SOCS box-containing protein 2; SBA2

Application Instructions

Application table	Application	Dilution
	WB	1:1000
Application Note	* The dilutions indicate recommended starting dilutions and the optimal dilutions or concentrations should be determined by the scientist.	
Positive Control	HeLa	

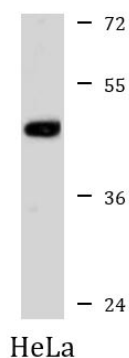
Properties

Form	Liquid
Purification	This antibody is prepared by Saturated Ammonium Sulfate (SAS) precipitation followed by dialysis against PBS.
Buffer	PBS and 0.09% (W/V) Sodium azide
Preservative	0.09% (W/V) Sodium azide
Storage instruction	For continuous use, store undiluted antibody at 2-8°C for up to a week. For long-term storage, aliquot and store at -20°C or below. Storage in frost free freezers is not recommended. Avoid repeated freeze/thaw cycles. Suggest spin the vial prior to opening. The antibody solution should be gently mixed before use.
Note	For laboratory research only, not for drug, diagnostic or other use.

Bioinformation

Database links	GeneID: 55884 Human Swiss-port # Q9NYS7 Human
Gene Symbol	WSB2
Gene Full Name	WD repeat and SOCS box containing 2
Background	This gene encodes a member of the WD-protein subfamily. The encoded protein contains five WD-repeats spanning most of the protein and an SOCS box in the C-terminus. The SOCS box may act as a bridge between specific substrate-binding domains and E3 ubiquitin protein ligases. Three transcript variants encoding different isoforms have been found for this gene. [provided by RefSeq, Jun 2013]
Function	May be a substrate-recognition component of a SCF-like ECS (Elongin-Cullin-SOCS-box protein) E3 ubiquitin ligase complex which mediates the ubiquitination and subsequent proteasomal degradation of target proteins. [UniProt]
Research Area	Cancer antibody; Cell Biology and Cellular Response antibody; Developmental Biology antibody
Calculated Mw	45 kDa

Images



ARG55019 anti-WSB2 antibody WB image

Western blot: 35 µg of HeLa cell lysate stained with ARG55019 anti-WSB2 antibody at 1:1000 dilution.