

ARG55057 anti-CDC5L antibody

Package: 100 µl
Store at: -20°C

Summary

Product Description	Rabbit Polyclonal antibody recognizes CDC5L
Tested Reactivity	Hu, Ms
Tested Application	WB
Host	Rabbit
Clonality	Polyclonal
Isotype	IgG
Target Name	CDC5L
Species	Human
Immunogen	Recombinant protein of Human CDC5L (Swiss: Q99459)
Conjugation	Un-conjugated
Alternate Names	Cell division cycle 5-like protein; dJ319D22.1; PCDC5RP; Pombe cdc5-related protein; CEF1; CDC5-LIKE; Cdc5-like protein; CDC5

Application Instructions

Application table	<table> <tr> <th>Application</th><th>Dilution</th></tr> <tr> <td>WB</td><td>1:500 - 1:2000</td></tr> </table>	Application	Dilution	WB	1:500 - 1:2000
Application	Dilution				
WB	1:500 - 1:2000				
Application Note	* The dilutions indicate recommended starting dilutions and the optimal dilutions or concentrations should be determined by the scientist.				
Positive Control	Mouse testis and SW480				

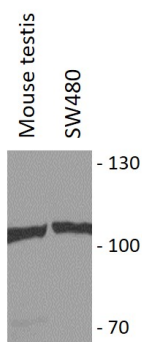
Properties

Form	Liquid
Purification	Affinity purification with immunogen.
Buffer	PBS (pH 7.3), 0.02% Sodium azide and 50% Glycerol
Preservative	0.02% Sodium azide
Stabilizer	50% Glycerol
Storage instruction	For continuous use, store undiluted antibody at 2-8°C for up to a week. For long-term storage, aliquot and store at -20°C. Storage in frost free freezers is not recommended. Avoid repeated freeze/thaw cycles. Suggest spin the vial prior to opening. The antibody solution should be gently mixed before use.
Note	For laboratory research only, not for drug, diagnostic or other use.

Bioinformation

Database links	GeneID: 71702 Mouse GeneID: 988 Human Swiss-port # Q6A068 Mouse Swiss-port # Q99459 Human
Gene Symbol	CDC5L
Gene Full Name	cell division cycle 5-like
Background	The protein encoded by this gene shares a significant similarity with <i>Schizosaccharomyces pombe</i> cdc5 gene product, which is a cell cycle regulator important for G2/M transition. This protein has been demonstrated to act as a positive regulator of cell cycle G2/M progression. It was also found to be an essential component of a non-snRNA spliceosome, which contains at least five additional protein factors and is required for the second catalytic step of pre-mRNA splicing. [provided by RefSeq, Jul 2008]
Function	DNA-binding protein involved in cell cycle control. May act as a transcription activator. Component of the PRP19-CDC5L complex that forms an integral part of the spliceosome and is required for activating pre-mRNA splicing. The PRP19-CDC5L complex may also play a role in the response to DNA damage (DDR). [UniProt]
Research Area	Gene Regulation antibody
Calculated Mw	92 kDa
PTM	Phosphorylated on serine and threonine residues. Phosphorylation on Thr-411 and Thr-438 is required for CDC5L-mediated mRNA splicing. Has no effect on subcellular location nor on homodimerization. Phosphorylated in vitro by CDK2. Phosphorylation enhances interaction with PPP1R8.

Images



ARG55057 anti-CDC5L antibody WB image

Western blot: Mouse testis and SW480 cell lysate stained with ARG55057 anti-CDC5L antibody.