

**ARG55061**  
**anti-Npap 1 antibody**Package: 100 µl  
Store at: -20°C

### Summary

Product Description	Rabbit Polyclonal antibody recognizes Npap 1
Tested Reactivity	Hu
Tested Application	FACS, IHC-P, WB
Host	Rabbit
Clonality	Polyclonal
Isotype	IgG
Target Name	Npap 1
Species	Human
Immunogen	KLH-conjugated synthetic peptide corresponding to aa. 348-377 (Center) of Human Npap1.
Conjugation	Un-conjugated
Alternate Names	Nuclear pore-associated protein 1; C15orf2

### Application Instructions

Application table	Application	Dilution
	FACS	1:10 - 1:50
	IHC-P	Assay-dependent
	WB	1:1000
Application Note	* The dilutions indicate recommended starting dilutions and the optimal dilutions or concentrations should be determined by the scientist.	
Positive Control	HeLa	

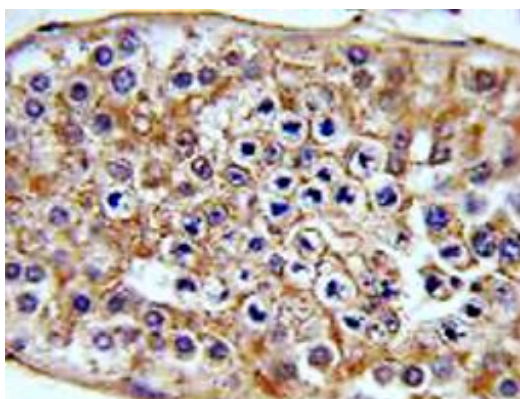
### Properties

Form	Liquid
Purification	Purification with Protein A and immunogen peptide.
Buffer	PBS and 0.09% (W/V) Sodium azide
Preservative	0.09% (W/V) Sodium azide
Storage instruction	For continuous use, store undiluted antibody at 2-8°C for up to a week. For long-term storage, aliquot and store at -20°C or below. Storage in frost free freezers is not recommended. Avoid repeated freeze/thaw cycles. Suggest spin the vial prior to opening. The antibody solution should be gently mixed before use.
Note	For laboratory research only, not for drug, diagnostic or other use.

## Bioinformation

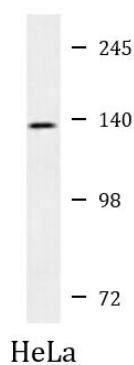
Database links	<a href="#">GeneID: 23742 Human</a> <a href="#">Swiss-port # Q9NZP6 Human</a>
Gene Symbol	NPAP1
Gene Full Name	nuclear pore associated protein 1
Background	This gene is located in the Prader-Willi syndrome region on chromosome 15. This gene is biallelically expressed in adult testis and brain but is paternally imprinted in fetal brain. Defects in this gene may be associated with Prader-Willi syndrome. [provided by RefSeq, Aug 2012]
Function	May be involved in spermatogenesis. [UniProt]
Research Area	Cell Biology and Cellular Response antibody
Calculated Mw	121 kDa
Cellular Localization	Nucleus, nucleoplasm. Nucleus inner membrane. Note=Colocalizes with the NPC and nuclear lamins at the nuclear periphery

## Images



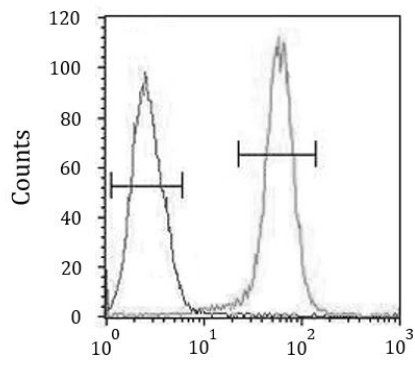
ARG55061 anti-Npap 1 antibody IHC-P image

Immunohistochemistry: Formalin-fixed and paraffin-embedded Human testis tissue stained with ARG55061 anti-Npap 1 antibody.



ARG55061 anti-Npap 1 antibody WB image

Western blot: 35 µg of HeLa cell lysate stained with ARG55061 anti-Npap 1 antibody.



#### ARG55061 anti-Npap 1 antibody FACS image

Flow Cytometry: HeLa cells stained with ARG55061 anti-Npap 1 antibody (right histogram) or without primary antibody control (left histogram), followed by incubation with FITC labelled secondary antibody.