

ARG55070 anti-CCDC36 / CT74 antibody

Package: 100 µl
Store at: -20°C

Summary

Product Description	Rabbit Polyclonal antibody recognizes CCDC36 / CT74
Tested Reactivity	Hu
Tested Application	ICC/IF, IHC-P, WB
Host	Rabbit
Clonality	Polyclonal
Isotype	IgG
Target Name	CCDC36 / CT74
Species	Human
Immunogen	KLH-conjugated synthetic peptide corresponding to aa. 422-450 (C-terminus) of Human CCDC36.
Conjugation	Un-conjugated
Alternate Names	CT74; Cancer/testis antigen 74; Coiled-coil domain-containing protein 36

Application Instructions

Application table	Application	Dilution
	ICC/IF	1:10 - 1:50
	IHC-P	Assay-dependent
	WB	1:1000
Application Note	* The dilutions indicate recommended starting dilutions and the optimal dilutions or concentrations should be determined by the scientist.	
Positive Control	293	

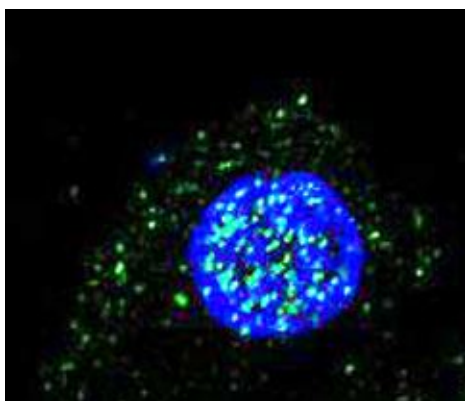
Properties

Form	Liquid
Purification	Purification with Protein A and immunogen peptide.
Buffer	PBS and 0.09% (W/V) Sodium azide
Preservative	0.09% (W/V) Sodium azide
Storage instruction	For continuous use, store undiluted antibody at 2-8°C for up to a week. For long-term storage, aliquot and store at -20°C or below. Storage in frost free freezers is not recommended. Avoid repeated freeze/thaw cycles. Suggest spin the vial prior to opening. The antibody solution should be gently mixed before use.
Note	For laboratory research only, not for drug, diagnostic or other use.

Bioinformation

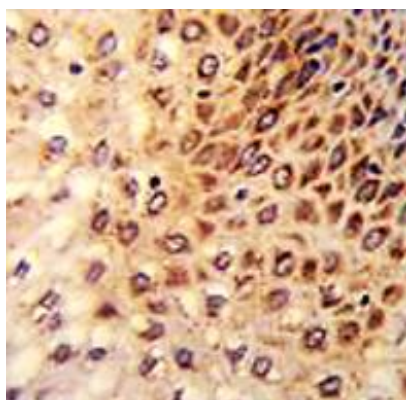
Database links	GeneID: 339834 Human Swiss-port # Q8IYA8 Human
Gene Symbol	CCDC36
Gene Full Name	coiled-coil domain containing 36
Research Area	Cell Biology and Cellular Response antibody
Calculated Mw	66 kDa

Images



ARG55070 anti-CCDC36 / CT74 antibody ICC/IF image

Immunofluorescence: 293 cells stained with ARG55070 anti-CCDC36 / CT74 antibody (green). DAPI (blue) for nuclear staining.



ARG55070 anti-CCDC36 / CT74 antibody IHC-P image

Immunohistochemistry: Formalin-fixed and paraffin-embedded Human esophageal carcinoma stained with ARG55070 anti-CCDC36 / CT74 antibody.



ARG55070 anti-CCDC36 / CT74 antibody WB image

Western blot: 35 µg of 293 cell lysate stained with ARG55070 anti-CCDC36 / CT74 antibody at 1:1000 dilution.