

ARG55082 anti-Cellular Apoptosis Susceptibility antibody

Package: 100 µl
Store at: -20°C

Summary

Product Description	Rabbit Polyclonal antibody recognizes Cellular Apoptosis Susceptibility
Tested Reactivity	Hu, Ms
Predict Reactivity	Bov, Zfsh
Tested Application	ICC/IF, IHC-P, WB
Host	Rabbit
Clonality	Polyclonal
Isotype	IgG
Target Name	Cellular Apoptosis Susceptibility
Species	Human
Immunogen	KLH-conjugated synthetic peptide corresponding to aa. 55-84 (C-terminus) of Human Cellular Apoptosis Susceptibility.
Conjugation	Un-conjugated
Alternate Names	XPO2; Exportin-2; CAS; Exp2; CSE1; Chromosome segregation 1-like protein; Importin-alpha re-exporter; Cellular apoptosis susceptibility protein

Application Instructions

Application table	Application	Dilution
	ICC/IF	1:100
	IHC-P	Assay-dependent
	WB	1:1000
Application Note	* The dilutions indicate recommended starting dilutions and the optimal dilutions or concentrations should be determined by the scientist.	
Positive Control	HeLa	

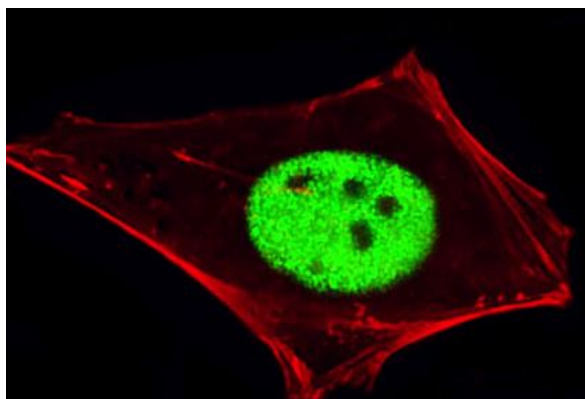
Properties

Form	Liquid
Purification	Purification with Protein G.
Buffer	PBS and 0.09% (W/V) Sodium azide
Preservative	0.09% (W/V) Sodium azide
Storage instruction	For continuous use, store undiluted antibody at 2-8°C for up to a week. For long-term storage, aliquot and store at -20°C or below. Storage in frost free freezers is not recommended. Avoid repeated freeze/thaw cycles. Suggest spin the vial prior to opening. The antibody solution should be gently mixed before use.

Bioinformation

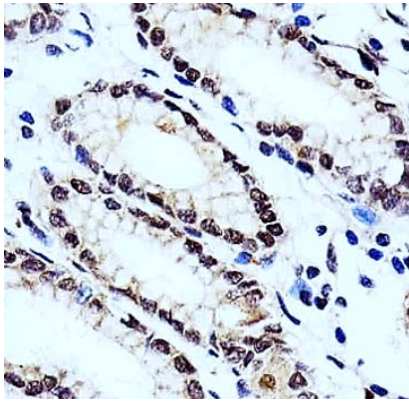
Database links	GeneID: 110750 Mouse GeneID: 1434 Human Swiss-port # P55060 Human Swiss-port # Q9ERK4 Mouse
Gene Symbol	CSE1L
Gene Full Name	CSE1 chromosome segregation 1-like (yeast)
Background	Proteins that carry a nuclear localization signal (NLS) are transported into the nucleus by the importin-alpha/beta heterodimer. Importin-alpha binds the NLS, while importin-beta mediates translocation through the nuclear pore complex. After translocation, RanGTP binds importin-beta and displaces importin-alpha. Importin-alpha must then be returned to the cytoplasm, leaving the NLS protein behind. The protein encoded by this gene binds strongly to NLS-free importin-alpha, and this binding is released in the cytoplasm by the combined action of RANBP1 and RANGAP1. In addition, the encoded protein may play a role both in apoptosis and in cell proliferation. Alternatively spliced transcript variants have been found for this gene. [provided by RefSeq, Jan 2012]
Function	Export receptor for importin-alpha. Mediates importin-alpha re-export from the nucleus to the cytoplasm after import substrates (cargos) have been released into the nucleoplasm. In the nucleus binds cooperatively to importin-alpha and to the GTPase Ran in its active GTP-bound form. Docking of this trimeric complex to the nuclear pore complex (NPC) is mediated through binding to nucleoporins. Upon transit of a nuclear export complex into the cytoplasm, disassembling of the complex and hydrolysis of Ran-GTP to Ran-GDP (induced by RANBP1 and RANGAP1, respectively) cause release of the importin-alpha from the export receptor. CSE1L/XPO2 then return to the nuclear compartment and mediate another round of transport. The directionality of nuclear export is thought to be conferred by an asymmetric distribution of the GTP- and GDP-bound forms of Ran between the cytoplasm and nucleus. [UniProt]
Research Area	Cancer antibody; Cell Biology and Cellular Response antibody; Cell Death antibody; Signaling Transduction antibody
Calculated Mw	110 kDa
Cellular Localization	Cytoplasm. Nucleus. Note=Shuttles between the nucleus and the cytoplasm

Images



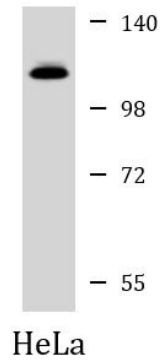
ARG55082 anti-Cellular Apoptosis Susceptibility antibody ICC/IF image

Immunofluorescence: HeLa cells stained with ARG55082 anti-Cellular Apoptosis Susceptibility antibody (green) at 1:100 dilution. Cytoplasmic actin was counterstained with Alexa Fluor® 555 conjugated with Phalloidin (red).



ARG55082 anti-Cellular Apoptosis Susceptibility antibody IHC-P image

Immunohistochemistry: Paraffin-embedded Human stomach tissue stained with ARG55082 anti-Cellular Apoptosis Susceptibility antibody at 1:100 dilution.



ARG55082 anti-Cellular Apoptosis Susceptibility antibody WB image

Western blot: 35 µg of HeLa cell lysate stained with ARG55082 anti-Cellular Apoptosis Susceptibility antibody at 1:1000 dilution.