

ARG55084 anti-CHCHD2 antibody

Package: 100 µl
Store at: -20°C

Summary

Product Description	Rabbit Polyclonal antibody recognizes CHCHD2
Tested Reactivity	Hu
Tested Application	FACS, IHC-P, WB
Host	Rabbit
Clonality	Polyclonal
Isotype	IgG
Target Name	CHCHD2
Species	Human
Immunogen	KLH-conjugated synthetic peptide corresponding to aa. 74-103 (Center) of Human CHCHD2.
Conjugation	Un-conjugated
Alternate Names	HCV NS2 trans-regulated protein; NS2TP; Aging-associated gene 10 protein; Coiled-coil-helix-coiled-coil-helix domain-containing protein 2; C7orf17

Application Instructions

Application table	Application	Dilution
	FACS	1:10 - 1:50
	IHC-P	1:50 - 1:100
	WB	1:1000
Application Note	* The dilutions indicate recommended starting dilutions and the optimal dilutions or concentrations should be determined by the scientist.	
Positive Control	WiDr	

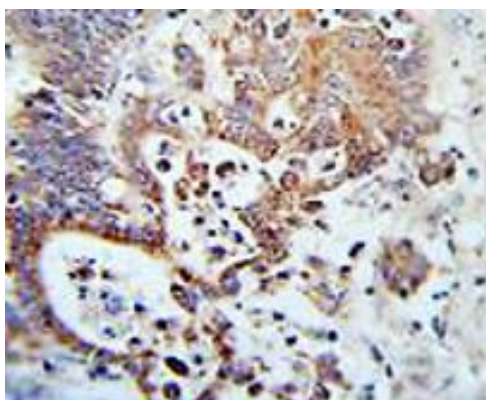
Properties

Form	Liquid
Purification	Purification with Protein A and immunogen peptide.
Buffer	PBS and 0.09% (W/V) Sodium azide
Preservative	0.09% (W/V) Sodium azide
Storage instruction	For continuous use, store undiluted antibody at 2-8°C for up to a week. For long-term storage, aliquot and store at -20°C or below. Storage in frost free freezers is not recommended. Avoid repeated freeze/thaw cycles. Suggest spin the vial prior to opening. The antibody solution should be gently mixed before use.
Note	For laboratory research only, not for drug, diagnostic or other use.

Bioinformation

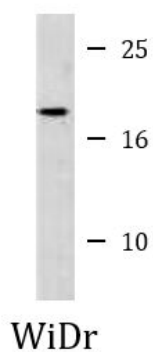
Database links	GeneID: 51142 Human Swiss-port # Q9Y6H1 Human
Gene Symbol	CHCHD2
Gene Full Name	coiled-coil-helix-coiled-coil-helix domain containing 2
Function	Transcription factor. Binds to the oxygen responsive element of COX4I2 and activates its transcription under hypoxia conditions (4% oxygen), as well as normoxia conditions (20% oxygen) (PubMed:23303788). [UniProt]
Research Area	Cell Biology and Cellular Response antibody
Calculated Mw	16 kDa
Cellular Localization	Mitochondrion.

Images



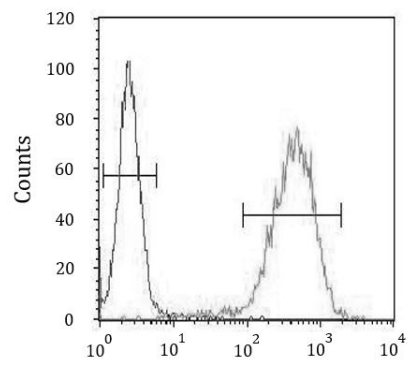
ARG55084 anti-CHCHD2 antibody (Center) IHC-P image

Immunohistochemistry: Formalin-fixed and paraffin-embedded Human colon carcinoma stained with ARG55084 anti-CHCHD2 antibody (Center).



ARG55084 anti-CHCHD2 antibody (Center) WB image

Western blot: 35 µg of WiDr cell lysate stained with ARG55084 anti-CHCHD2 antibody (Center).



ARG55084 anti-CHCHD2 antibody (Center) FACS image

Flow Cytometry: WiDr cells stained with ARG55084 anti-CHCHD2 antibody (Center) (right histogram) or without primary antibody control (left histogram), followed by incubation with FITC labelled secondary antibody.