

## ARG55090 anti-CIRBP antibody

Package: 100 µl  
Store at: -20°C

### Summary

Product Description	Rabbit Polyclonal antibody recognizes CIRBP
Tested Reactivity	Hu
Predict Reactivity	Ms, Rat, Hm
Tested Application	IHC-P, WB
Host	Rabbit
Clonality	Polyclonal
Isotype	IgG
Target Name	CIRBP
Species	Human
Immunogen	KLH-conjugated synthetic peptide corresponding to aa. 145-172 (C-terminus) of Human CIRBP.
Conjugation	Un-conjugated
Alternate Names	Cold-inducible RNA-binding protein; CIRP; Glycine-rich RNA-binding protein CIRP; A18 hnRNP

### Application Instructions

Application table	Application	Dilution
	IHC-P	Assay-dependent
	WB	1:1000
Application Note	* The dilutions indicate recommended starting dilutions and the optimal dilutions or concentrations should be determined by the scientist.	
Positive Control	Y79	

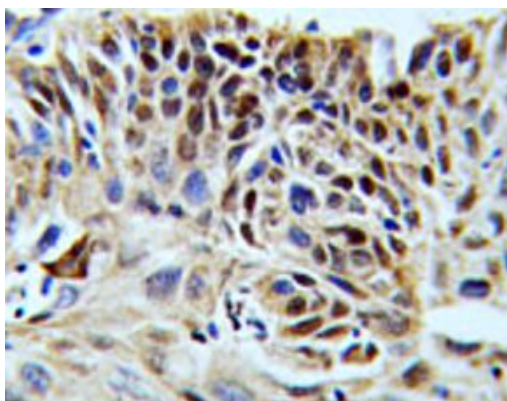
### Properties

Form	Liquid
Purification	Purification with Protein A and immunogen peptide.
Buffer	PBS and 0.09% (W/V) Sodium azide
Preservative	0.09% (W/V) Sodium azide
Storage instruction	For continuous use, store undiluted antibody at 2-8°C for up to a week. For long-term storage, aliquot and store at -20°C or below. Storage in frost free freezers is not recommended. Avoid repeated freeze/thaw cycles. Suggest spin the vial prior to opening. The antibody solution should be gently mixed before use.
Note	For laboratory research only, not for drug, diagnostic or other use.

## Bioinformation

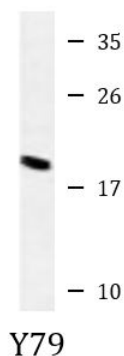
Database links	<a href="#">GeneID: 1153 Human</a> <a href="#">Swiss-port # Q14011 Human</a>
Gene Symbol	CIRBP
Gene Full Name	cold inducible RNA binding protein
Function	Cold-inducible mRNA binding protein that plays a protective role in the genotoxic stress response by stabilizing transcripts of genes involved in cell survival. Acts as a translational activator. Seems to play an essential role in cold-induced suppression of cell proliferation. Binds specifically to the 3'-untranslated regions (3'-UTRs) of stress-responsive transcripts RPA2 and TXN. Acts as a translational repressor (By similarity). Promotes assembly of stress granules (SGs), when overexpressed. [UniProt]
Research Area	Cell Biology and Cellular Response antibody; Gene Regulation antibody
Calculated Mw	19 kDa
PTM	Methylated on arginine residues. Methylation of the RGG motifs is a prerequisite for recruitment into SGs (By similarity). Phosphorylated by CK2, GSK3A and GSK3B. Phosphorylation by GSK3B increases RNA-binding activity to the TXN 3'-UTR transcript upon exposure to UV radiation.
Cellular Localization	Nucleus, nucleoplasm. Cytoplasm. Note=Translocates from the nucleus to the cytoplasm after exposure to UV radiation. Translocates from the nucleus to the cytoplasm into stress granules upon various cytoplasmic stresses, such as osmotic and heat shocks. Its recruitment into stress granules occurs in the absence of TIAR proteins (By similarity).

## Images



ARG55090 anti-CIRBP antibody IHC-P image

Immunohistochemistry: Formalin-fixed and paraffin-embedded Human lung carcinoma stained with ARG55090 anti-CIRBP antibody.



ARG55090 anti-CIRBP antibody WB image

Western blot: 35 µg of Y79 cell lysate stained with ARG55090 anti-CIRBP antibody.