

## ARG55109 anti-SLPI antibody

Package: 50 µg  
Store at: -20°C

### Summary

Product Description	Rabbit Polyclonal antibody recognizes SLPI
Tested Reactivity	Hu, Ms
Tested Application	ELISA, IHC-P, WB
Host	Rabbit
Clonality	Polyclonal
Isotype	IgG
Target Name	SLPI
Species	Human
Immunogen	Synthetic peptide (17 aa) within aa. 60-110 of Human SLPI.
Conjugation	Un-conjugated
Alternate Names	HUSI-1; Antileukoproteinase; WAP4; Protease inhibitor WAP4; ALK1; WAP four-disulfide core domain protein 4; BLPI; MPI; HUSI; Secretory leukocyte protease inhibitor; Seminal proteinase inhibitor; Mucus proteinase inhibitor; HUSI-I; WFDC4; ALP

### Application Instructions

Application table	Application	Dilution
	ELISA	Assay-dependent
	IHC-P	Assay-dependent
	WB	1 - 2 µg/ml
Application Note	* The dilutions indicate recommended starting dilutions and the optimal dilutions or concentrations should be determined by the scientist.	
Positive Control	Daudi Cell Lysate	

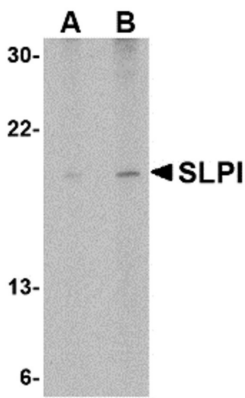
### Properties

Form	Liquid
Purification	Affinity purification with immunogen.
Buffer	PBS and 0.02% Sodium azide
Preservative	0.02% Sodium azide
Concentration	1 mg/ml
Storage instruction	For continuous use, store undiluted antibody at 2-8°C for up to a week. For long-term storage, aliquot and store at -20°C or below. Storage in frost free freezers is not recommended. Avoid repeated freeze/thaw cycles. Suggest spin the vial prior to opening. The antibody solution should be gently mixed before use.

Bioinformation

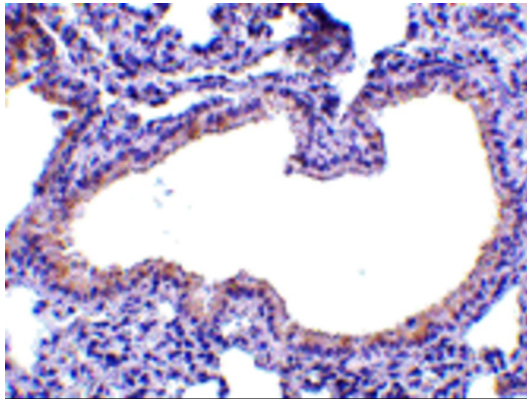
Database links	<a href="#">GeneID: 20568 Mouse</a> <a href="#">GeneID: 6590 Human</a> <a href="#">Swiss-port # P03973 Human</a> <a href="#">Swiss-port # P97430 Mouse</a>
Gene Symbol	SLPI
Gene Full Name	secretory leukocyte peptidase inhibitor
Background	SLPI Antibody: Secretory leukocyte protease inhibitor (SLPI) is produced at mucosal surfaces, primarily the upper respiratory tract and is thought to play an important role in the antiprotease defense mechanism of the lung. SLPI forms inhibitory complexes with numerous proteolytic enzymes such as neutrophil elastase, and has been shown to possess anti-inflammatory, anti-viral, and antibacterial activities. Its expression in oral epithelial cells is stimulated by HIV-1 gp120, suggesting that SLPI is a component of the oral mucosal response to HIV-1. In peripheral blood monocytes, SLPI can inhibit NF-κB activation by inhibiting IκB degradation in the cytoplasm and competing for NF-κB binding sites in the nucleus. This attenuation of the inflammatory response may also act to suppress liver metastases and other cancer cell invasions, but promote blood-borne metastasis via an invasion-independent pathway.
Function	Acid-stable proteinase inhibitor with strong affinities for trypsin, chymotrypsin, elastase, and cathepsin G. May prevent elastase-mediated damage to oral and possibly other mucosal tissues. [UniProt]
Research Area	Cell Biology and Cellular Response antibody; Immune System antibody
Calculated Mw	14 kDa

Images



ARG55109 anti-SLPI antibody WB image

Western blot: Daudi cell lysate stained with ARG55109 anti-SLPI antibody at (A) 1 and (B) 2 ug/ml dilution.



ARG55109 anti-SLPI antibody IHC image

Immunohistochemistry: SLPI in mouse lung tissue stained with ARG55109 anti-SLPI antibody at 10 ug/ml dilution.