

ARG55115 anti-TBX21 / T-bet antibody

Package: 50 µg
Store at: -20°C

Summary

Product Description	Rabbit Polyclonal antibody recognizes TBX21 / T-bet
Tested Reactivity	Hu, Ms
Tested Application	ELISA, ICC/IF, WB
Specificity	TBX21 antibody is human and mouse reactive.
Host	Rabbit
Clonality	Polyclonal
Isotype	IgG
Target Name	TBX21 / T-bet
Species	Human
Immunogen	Synthetic peptide (19 aa) within the last 50 aa of Human TBX21 / T-bet protein.
Conjugation	Un-conjugated
Alternate Names	T-box protein 21; T-box transcription factor TBX21; TBET; T-cell-specific T-box transcription factor T-bet; T-bet; T-PET; TBLYM; Transcription factor TBLYM

Application Instructions

Application table	Application	Dilution
	ELISA	Assay-dependent
	ICC/IF	Assay-dependent
	WB	1 - 2 µg/ml
Application Note	* The dilutions indicate recommended starting dilutions and the optimal dilutions or concentrations should be determined by the scientist.	
Positive Control	Cat. No. 1210- 293 Cell Lysate	

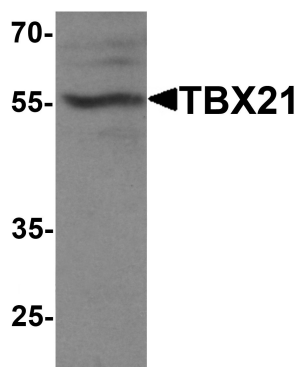
Properties

Form	Liquid
Purification	Affinity purification with immunogen.
Buffer	PBS and 0.02% Sodium azide
Preservative	0.02% Sodium azide
Concentration	1 mg/ml
Storage instruction	For continuous use, store undiluted antibody at 2-8°C for up to a week. For long-term storage, aliquot and store at -20°C or below. Storage in frost free freezers is not recommended. Avoid repeated freeze/thaw cycles. Suggest spin the vial prior to opening. The antibody solution should be gently mixed before use.

Bioinformation

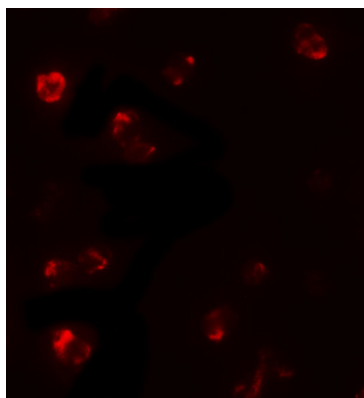
Database links	GeneID: 30009 Human GeneID: 57765 Mouse Swiss-port # Q9JKD8 Mouse Swiss-port # Q9UL17 Human
Gene Symbol	TBX21
Gene Full Name	T-box 21
Background	TBX21 is a member of a phylogenetically conserved family of genes that share a common DNA-binding domain, the T-box. Members of this family include transcription factors involved in the regulation of developmental processes. Studies in mouse and humans show that TBX21 is a Th1 cell-specific transcription factor that controls the expression of the hallmark Th1 cytokine, interferon-gamma. Expression of the human ortholog also correlates with interferon-gamma expression in Th1 and natural killer cells, suggesting a TBX21 may play a role in initiating Th1 lineage development from naive Th precursor cells.
Function	Transcription factor that controls the expression of the TH1 cytokine, interferon-gamma. Initiates TH1 lineage development from naive TH precursor cells both by activating TH1 genetic programs and by repressing the opposing TH2 programs. [UniProt]
Research Area	Developmental Biology antibody; Gene Regulation antibody; Immune System antibody
Calculated Mw	58 kDa

Images



ARG55115 anti-TBX21 / T-bet antibody WB image

Western blot: 293 cell lysate stained with ARG55115 anti-TBX21 / T-bet antibody at 1 ug/ml dilution.



ARG55115 anti-TBX21 / T-bet antibody ICC/IF image

Immunofluorescence: 293 cells stained with ARG55115 anti-TBX21 / T-bet antibody at 5 ug/ml dilution.