

## ARG55133 anti-alpha amylase 2B antibody

Package: 100 µl  
Store at: -20°C

### Summary

Product Description	Rabbit Polyclonal antibody recognizes alpha amylase 2B
Tested Reactivity	Hu
Tested Application	FACS, ICC/IF, IHC-P, WB
Host	Rabbit
Clonality	Polyclonal
Isotype	IgG
Target Name	alpha amylase 2B
Species	Human
Immunogen	KLH-conjugated synthetic peptide corresponding to aa. 74-100 (N-terminus) of Human alpha amylase 2B.
Conjugation	Un-conjugated
Alternate Names	AMY3; HXA; 1,4-alpha-D-glucan glucanohydrolase 2B; AMY2; Alpha-amylase 2B; EC 3.2.1.1; Carcinoid alpha-amylase

### Application Instructions

Application table	Application	Dilution
	FACS	1:10 - 1:50
	ICC/IF	1:10 - 1:50
	IHC-P	Assay-dependent
	WB	1:1000
Application Note	* The dilutions indicate recommended starting dilutions and the optimal dilutions or concentrations should be determined by the scientist.	
Positive Control	HL-60	

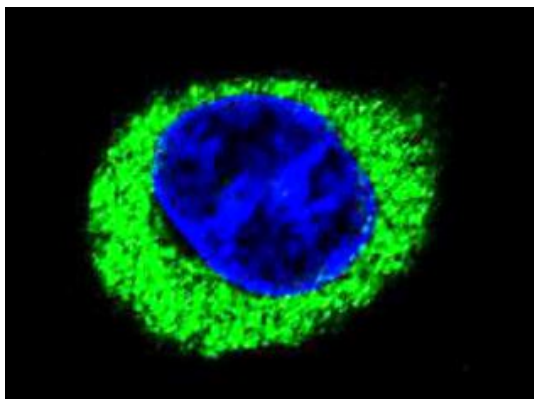
### Properties

Form	Liquid
Purification	Purification with Protein A and immunogen peptide.
Buffer	PBS and 0.09% (W/V) Sodium azide
Preservative	0.09% (W/V) Sodium azide
Storage instruction	For continuous use, store undiluted antibody at 2-8°C for up to a week. For long-term storage, aliquot and store at -20°C or below. Storage in frost free freezers is not recommended. Avoid repeated freeze/thaw cycles. Suggest spin the vial prior to opening. The antibody solution should be gently mixed before use.

## Bioinformation

Database links	<a href="#">GeneID: 280 Human</a> <a href="#">Swiss-port # P19961 Human</a>
Gene Symbol	AMY2B
Gene Full Name	amylase, alpha 2B (pancreatic)
Background	Amylases are secreted proteins that hydrolyze 1,4-alpha-glucoside bonds in oligosaccharides and polysaccharides, and thus catalyze the first step in digestion of dietary starch and glycogen. The human genome has a cluster of several amylase genes that are expressed at high levels in either salivary gland or pancreas. This gene encodes an amylase isoenzyme produced by the pancreas. [provided by RefSeq, Jun 2013]
Function	Endohydrolysis of (1->4)-alpha-D-glucosidic linkages in polysaccharides containing three or more (1->4)-alpha-linked D-glucose units. [UniProt]
Research Area	Metabolism antibody; Signaling Transduction antibody
Calculated Mw	58 kDa
Cellular Localization	Secreted.

## Images



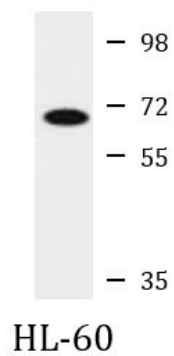
ARG55133 anti-alpha amylase 2B antibody ICC/IF image

Immunofluorescence: 293 cells stained with ARG55133 anti-alpha amylase 2B antibody (green). DAPI (blue) for nuclear staining.



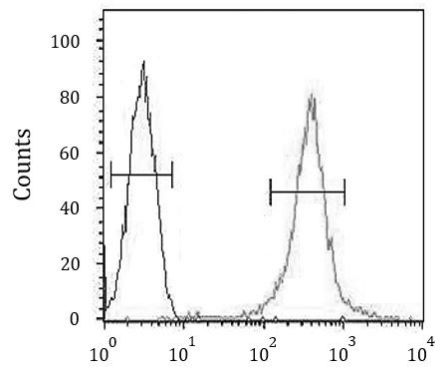
ARG55133 anti-alpha amylase 2B antibody IHC-P image

Immunohistochemistry: Formalin-fixed and paraffin-embedded Human brain tissue stained with ARG55133 anti-alpha amylase 2B antibody.



ARG55133 anti-alpha amylase 2B antibody WB image

Western blot: 35 µg of HL-60 cell lysate stained with ARG55133 anti-alpha amylase 2B antibody.



ARG55133 anti-alpha amylase 2B antibody FACS image

Flow Cytometry: CEM cells stained with ARG55133 anti-alpha amylase 2B antibody (right histogram) or without primary antibody control (left histogram), followed by incubation with FITC labelled secondary antibody.