

## ARG55137 anti-AFG3L2 antibody

Package: 100 µl  
Store at: -20°C

### Summary

|                     |   |
|---------------------|---|
| Product Description | Rabbit Polyclonal antibody recognizes AFG3L2  |
| Tested Reactivity   | Hu  |
| Predict Reactivity  | Ms, Bov   |
| Tested Application  | IHC-P, WB   |
| Host                | Rabbit  |
| Clonality           | Polyclonal  |
| Isotype             | IgG   |
| Target Name         | AFG3L2  |
| Species             | Human   |
| Immunogen           | KLH-conjugated synthetic peptide corresponding to aa. 52-80 (N-terminus) of Human AFG3L2. |
| Conjugation         | Un-conjugated   |
| Alternate Names     | SCA28; AFG3-like protein 2; SPAX5; Paraplegin-like protein; EC 3.4.24.-                   |

### Application Instructions

|                   |  |                 |
|-------------------|--|-----------------|
| Application table | Application  | Dilution        |
|                   | IHC-P  | Assay-dependent |
|                   | WB   | 1:1000          |
| Application Note  | * The dilutions indicate recommended starting dilutions and the optimal dilutions or concentrations should be determined by the scientist. |                 |
| Positive Control  | MDA-MB-453   |                 |

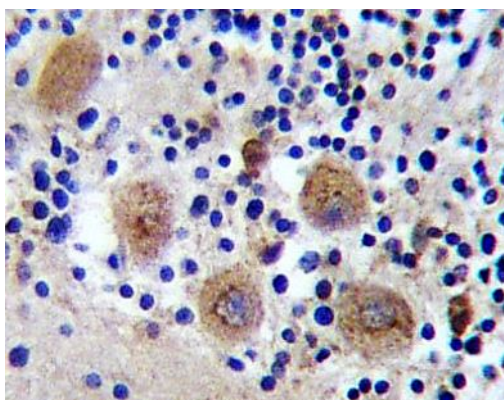
### Properties

|                     |  |
|---------------------|--|
| Form                | Liquid   |
| Purification        | Purification with Protein A and immunogen peptide.   |
| Buffer              | PBS and 0.09% (W/V) Sodium azide   |
| Preservative        | 0.09% (W/V) Sodium azide   |
| Storage instruction | For continuous use, store undiluted antibody at 2-8°C for up to a week. For long-term storage, aliquot and store at -20°C or below. Storage in frost free freezers is not recommended. Avoid repeated freeze/thaw cycles. Suggest spin the vial prior to opening. The antibody solution should be gently mixed before use. |
| Note                | For laboratory research only, not for drug, diagnostic or other use.   |

## Bioinformation

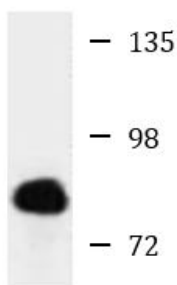
|                       |   |
|-----------------------|---|
| Database links        | <a href="#">GeneID: 10939 Human</a><br><a href="#">Swiss-port # Q9Y4W6 Human</a>  |
| Gene Symbol           | AFG3L2  |
| Gene Full Name        | AFG3-like AAA ATPase 2  |
| Background            | This gene encodes a protein localized in mitochondria and closely related to paraplegin. The paraplegin gene is responsible for an autosomal recessive form of hereditary spastic paraplegia. This gene is a candidate gene for other hereditary spastic paraplegias or neurodegenerative disorders. [provided by RefSeq, Jul 2008] |
| Function              | ATP-dependent protease which is essential for axonal development. [UniProt]   |
| Research Area         | Cell Biology and Cellular Response antibody; Metabolism antibody; Neuroscience antibody; Signaling Transduction antibody  |
| Calculated Mw         | 89 kDa  |
| Cellular Localization | Mitochondrion membrane; Multi-pass membrane protein   |

## Images



ARG55137 anti-AFG3L2 antibody IHC-P image

Immunohistochemistry: Formalin-fixed and paraffin-embedded Human cerebellum tissue stained with ARG55137 anti-AFG3L2 antibody.



MDA-MB-453

ARG55137 anti-AFG3L2 antibody WB image

Western blot: 35 µg of MDA-MB-453 cell lysate stained with ARG55137 anti-AFG3L2 antibody.