

ARG55140
anti-APRG1 antibodyPackage: 100 µl
Store at: -20°C

Summary

Product Description	Rabbit Polyclonal antibody recognizes APRG1
Tested Reactivity	Hu
Tested Application	WB
Host	Rabbit
Clonality	Polyclonal
Isotype	IgG
Target Name	APRG1
Species	Human
Immunogen	KLH-conjugated synthetic peptide corresponding to aa. 59-88 (Center) of Human APRG1.
Conjugation	Un-conjugated
Alternate Names	AP20 region protein 1; APRG1

Application Instructions

Application table	Application	Dilution
	WB	1:1000
Application Note	* The dilutions indicate recommended starting dilutions and the optimal dilutions or concentrations should be determined by the scientist.	
Positive Control	HL-60	

Properties

Form	Liquid
Purification	Purification with Protein A and immunogen peptide.
Buffer	PBS and 0.09% (W/V) Sodium azide
Preservative	0.09% (W/V) Sodium azide
Storage instruction	For continuous use, store undiluted antibody at 2-8°C for up to a week. For long-term storage, aliquot and store at -20°C or below. Storage in frost free freezers is not recommended. Avoid repeated freeze/thaw cycles. Suggest spin the vial prior to opening. The antibody solution should be gently mixed before use.
Note	For laboratory research only, not for drug, diagnostic or other use.

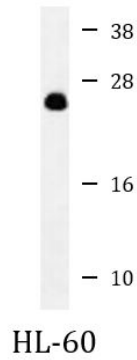
Bioinformation

Database links	GeneID: 339883 Human
----------------	--------------------------------------

[Swiss-port # Q8IVJ8 Human](#)

Gene Symbol	C3orf35
Gene Full Name	chromosome 3 open reading frame 35
Research Area	Cancer antibody
Calculated Mw	19 kDa
Cellular Localization	Membrane; Single-pass membrane protein

Images



ARG55140 anti-APRG1 antibody WB image

Western blot: 35 µg of HL-60 cell lysate stained with ARG55140 anti-APRG1 antibody.