

ARG55142 anti-CD107a / LAMP1 antibody

Package: 100 µl
Store at: -20°C

Summary

| | |
|---------------------|---|
| Product Description | Rabbit Polyclonal antibody recognizes CD107a / LAMP1 |
| Tested Reactivity | Hu, Ms |
| Tested Application | ICC/IF, IHC-P, WB |
| Host | Rabbit |
| Clonality | Polyclonal |
| Isotype | IgG |
| Target Name | CD107a / LAMP1 |
| Species | Human |
| Immunogen | KLH-conjugated synthetic peptide corresponding to aa. 125-154 (N-terminus) of Human LAMP1. |
| Conjugation | Un-conjugated |
| Alternate Names | LGP120; CD107a; LAMPA; CD antigen CD107a; Lysosome-associated membrane glycoprotein 1; CD107 antigen-like family member A; LAMP-1; Lysosome-associated membrane protein 1 |

Application Instructions

| Application table | Application | Dilution |
|-------------------|--|-----------------|
| | ICC/IF | 1:200 |
| | IHC-P | Assay-dependent |
| | WB | 1:1000 |
| Application Note | * The dilutions indicate recommended starting dilutions and the optimal dilutions or concentrations should be determined by the scientist. | |
| Positive Control | Human placenta | |

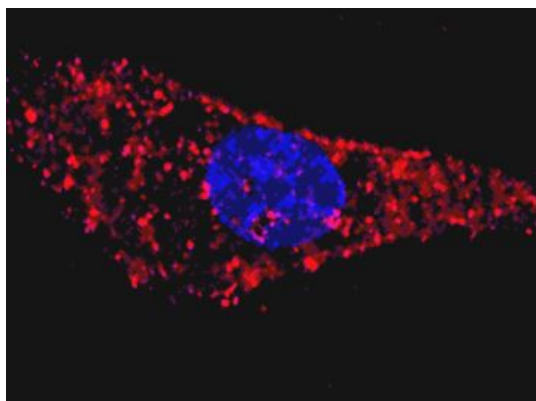
Properties

| | |
|---------------------|--|
| Form | Liquid |
| Purification | Purification with Protein A and immunogen peptide. |
| Buffer | PBS and 0.09% (W/V) Sodium azide |
| Preservative | 0.09% (W/V) Sodium azide |
| Storage instruction | For continuous use, store undiluted antibody at 2-8°C for up to a week. For long-term storage, aliquot and store at -20°C or below. Storage in frost free freezers is not recommended. Avoid repeated freeze/thaw cycles. Suggest spin the vial prior to opening. The antibody solution should be gently mixed before use. |
| Note | For laboratory research only, not for drug, diagnostic or other use. |

Bioinformation

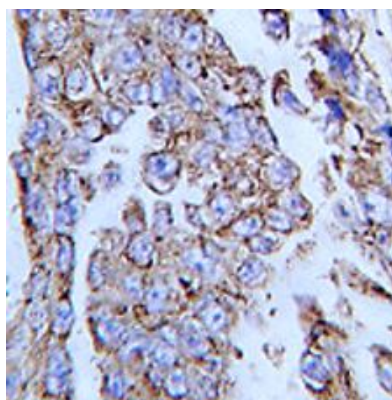
| | |
|-----------------------|--|
| Database links | GeneID: 16783 Mouse |
| | GeneID: 3916 Human |
| | Swiss-port # P11279 Human |
| | Swiss-port # P11438 Mouse |
| Gene Symbol | LAMP1 |
| Gene Full Name | lysosomal-associated membrane protein 1 |
| Background | The protein encoded by this gene is a member of a family of membrane glycoproteins. This glycoprotein provides selectins with carbohydrate ligands. It may also play a role in tumor cell metastasis. [provided by RefSeq, Jul 2008] |
| Function | Presents carbohydrate ligands to selectins. Also implicated in tumor cell metastasis. [UniProt] |
| Research Area | Cancer antibody; Cell Death antibody; Controls and Markers antibody; Developmental Biology antibody; Metabolism antibody; Neuroscience antibody; Signaling Transduction antibody; Lysosome Marker antibody |
| Calculated Mw | 45 kDa |
| PTM | O- and N-glycosylated; some of the 18 N-linked glycans are polylactosaminoglycans. The glycosylation of N-76 is essential for Lassa virus entry into cells. |
| Cellular Localization | Cell membrane; Single-pass type I membrane protein. Endosome membrane; Single-pass type I membrane protein. Lysosome membrane; Single-pass type I membrane protein. Late endosome. Note=This protein shuttles between lysosomes, endosomes, and the plasma membrane. Colocalizes with OSBPL1A at the late endosome |

Images



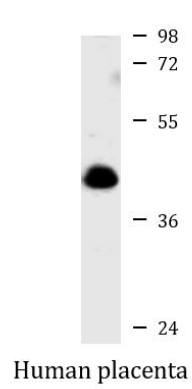
ARG55142 anti-CD107a / LAMP1 antibody ICC/IF image

Immunofluorescence: U251 cells were treated with Chloroquine (50 μ M, 16 hours), then fixed with 4% PFA (20 min), permeabilized with Triton X-100 (0.2%, 30 min). Cells were then stained with ARG55142 anti-CD107a / LAMP1 antibody (red) at 1:200 dilution, 2 hours at room temperature. Nuclei were counterstained with Hoechst 33342 (blue) (10 μ g/ml, 5 min).



ARG55142 anti-CD107a / LAMP1 antibody IHC-P image

Immunohistochemistry: Formalin-fixed and paraffin-embedded Human lung carcinoma tissue stained with ARG55142 anti-CD107a / LAMP1 antibody.



ARG55142 anti-CD107a / LAMP1 antibody WB image

Western blot: 35 µg of Human placenta lysate stained with ARG55142 anti-CD107a / LAMP1 antibody at 1:1000 dilution.