

## ARG55148 anti-alpha 1D Adrenergic Receptor antibody

Package: 100 µl  
Store at: -20°C

### Summary

Product Description	Rabbit Polyclonal antibody recognizes alpha 1D Adrenergic Receptor
Tested Reactivity	Hu, Rat
Predict Reactivity	Ms, Bov, Dog, Rb, Sheep
Tested Application	FACS, IHC-P, WB
Host	Rabbit
Clonality	Polyclonal
Isotype	IgG
Target Name	alpha 1D Adrenergic Receptor
Species	Human
Immunogen	KLH-conjugated synthetic peptide corresponding to aa. 1-30 (N-terminus) of Human alpha 1D Adrenergic Receptor.
Conjugation	Un-conjugated
Alternate Names	ADRA1A; Alpha-1D adrenoceptor; ALPHA1; ADRA1; Alpha-1D adrenoceptor; Alpha-1D adrenergic receptor; Alpha-1A adrenergic receptor; ADRA1R; DAR; dJ779E11.2; Alpha-adrenergic receptor 1a

### Application Instructions

Application table	Application	Dilution
	FACS	1:25
	IHC-P	Assay-dependent
	WB	1:1000
Application Note	* The dilutions indicate recommended starting dilutions and the optimal dilutions or concentrations should be determined by the scientist.	
Positive Control	A549	

### Properties

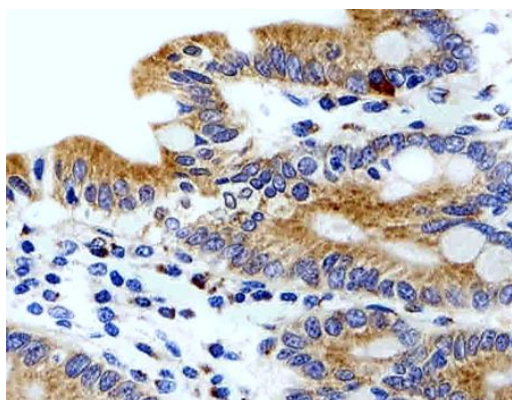
Form	Liquid
Purification	Purification with Protein A and immunogen peptide.
Buffer	PBS and 0.09% (W/V) Sodium azide
Preservative	0.09% (W/V) Sodium azide
Storage instruction	For continuous use, store undiluted antibody at 2-8°C for up to a week. For long-term storage, aliquot and store at -20°C or below. Storage in frost free freezers is not recommended. Avoid repeated freeze/thaw cycles. Suggest spin the vial prior to opening. The antibody solution should be gently mixed before use.

Note For laboratory research only, not for drug, diagnostic or other use.

## Bioinformation

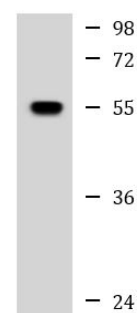
Database links	<a href="#">GeneID: 146 Human</a> <a href="#">GeneID: 29413 Rat</a> <a href="#">Swiss-port # P23944 Rat</a> <a href="#">Swiss-port # P25100 Human</a>
Gene Symbol	ADRA1D
Gene Full Name	adrenoceptor alpha 1D
Background	Alpha-1-adrenergic receptors (alpha-1-ARs) are members of the G protein-coupled receptor superfamily. They activate mitogenic responses and regulate growth and proliferation of many cells. There are 3 alpha-1-AR subtypes: alpha-1A, -1B and -1D, all of which signal through the Gq/11 family of G-proteins and different subtypes show different patterns of activation. This gene encodes alpha-1D-adrenergic receptor. Similar to alpha-1B-adrenergic receptor gene, this gene comprises 2 exons and a single intron that interrupts the coding region. [provided by RefSeq, Jul 2008]
Function	This alpha-adrenergic receptor mediates its effect through the influx of extracellular calcium. [UniProt]
Research Area	Cell Biology and Cellular Response antibody; Signaling Transduction antibody
Calculated Mw	60 kDa
Cellular Localization	Cell membrane; Multi-pass membrane protein.

## Images



ARG55148 anti-alpha 1D Adrenergic Receptor antibody IHC-P image

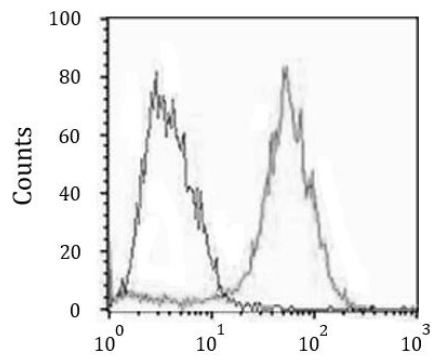
Immunohistochemistry: Paraffin-embedded Human small intestine tissue stained with ARG55148 anti-alpha 1D Adrenergic Receptor antibody at 1:100 dilution.



A549

ARG55148 anti-alpha 1D Adrenergic Receptor antibody WB image

Western blot: 35 µg of A549 cell lysate stained with ARG55148 anti-alpha 1D Adrenergic Receptor antibody at 1:1000 dilution.



#### ARG55148 anti-alpha 1D Adrenergic Receptor antibody FACS image

Flow Cytometry: MCF7 cells stained with ARG55148 anti-alpha 1D Adrenergic Receptor antibody (right histogram) at 1:25 dilution or isotype control antibody (left histogram), followed by incubation with Alexa Fluor® 488 labelled secondary antibody.