

ARG55151 anti-APAP1 antibody

Package: 100 µl
Store at: -20°C

Summary

| | |
|---------------------|---|
| Product Description | Rabbit Polyclonal antibody recognizes APAP1 |
| Tested Reactivity | Hu |
| Tested Application | WB |
| Host | Rabbit |
| Clonality | Polyclonal |
| Isotype | IgG |
| Target Name | APAP1 |
| Species | Human |
| Immunogen | KLH-conjugated synthetic peptide corresponding to aa. 444-477 of Human APAP1. |
| Conjugation | Un-conjugated |
| Alternate Names | 110 kDa actin filament-associated protein; AFAP110; AFAP-110; AFAP; Actin filament-associated protein 1 |

Application Instructions

| | | |
|-------------------|--|----------|
| Application table | Application | Dilution |
| | WB | 1:1000 |
| Application Note | * The dilutions indicate recommended starting dilutions and the optimal dilutions or concentrations should be determined by the scientist. | |
| Positive Control | HeLa | |

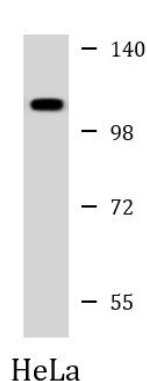
Properties

| | |
|---------------------|--|
| Form | Liquid |
| Purification | Purification with Protein A and immunogen peptide. |
| Buffer | PBS and 0.09% (W/V) Sodium azide |
| Preservative | 0.09% (W/V) Sodium azide |
| Storage instruction | For continuous use, store undiluted antibody at 2-8°C for up to a week. For long-term storage, aliquot and store at -20°C or below. Storage in frost free freezers is not recommended. Avoid repeated freeze/thaw cycles. Suggest spin the vial prior to opening. The antibody solution should be gently mixed before use. |
| Note | For laboratory research only, not for drug, diagnostic or other use. |

Bioinformation

| | |
|-----------------------|---|
| Database links | GeneID: 60312 Human Swiss-port # Q8N556 Human |
| Gene Symbol | AFAP1 |
| Gene Full Name | actin filament associated protein 1 |
| Background | The protein encoded by this gene is a Src binding partner. It may represent a potential modulator of actin filament integrity in response to cellular signals, and may function as an adaptor protein by linking Src family members and/or other signaling proteins to actin filaments. Multiple transcript variants encoding different isoforms have been found for this gene. [provided by RefSeq, Aug 2008] |
| Function | Can cross-link actin filaments into both network and bundle structures (By similarity). May modulate changes in actin filament integrity and induce lamellipodia formation. May function as an adapter molecule that links other proteins, such as SRC and PKC to the actin cytoskeleton. Seems to play a role in the development and progression of prostate adenocarcinoma by regulating cell-matrix adhesions and migration in the cancer cells. [UniProt] |
| Research Area | Signaling Transduction antibody |
| Calculated Mw | 81 kDa |
| PTM | Phosphorylated on tyrosine residues by SRC. |
| Cellular Localization | Cytoplasm, cytoskeleton. Note=Localizes with stress fibers in quiescent cells, concentrated in cell motility structures such as lamellipodia, filopodia and membrane ruffles upon their induction |

Images



ARG55151 anti-APAP1 antibody WB image

Western blot: 35 µg of HeLa cell lysate stained with ARG55151 anti-APAP1 antibody at 1:1000 dilution.