

ARG55157 anti-Aftiphilin antibody

Package: 100 µl
Store at: -20°C

Summary

Product Description	Rabbit Polyclonal antibody recognizes Aftiphilin
Tested Reactivity	Hu
Predict Reactivity	Ms
Tested Application	FACS, IHC-P, WB
Host	Rabbit
Clonality	Polyclonal
Isotype	IgG
Target Name	Aftiphilin
Species	Human
Immunogen	KLH-conjugated synthetic peptide corresponding to aa. 844-871 (C-terminus) of Human Aftiphilin.
Conjugation	Un-conjugated
Alternate Names	Aftiphilin; Nbla10388

Application Instructions

Application table	Application	Dilution
	FACS	1:10 - 1:50
	IHC-P	Assay-dependent
	WB	1:1000
Application Note	* The dilutions indicate recommended starting dilutions and the optimal dilutions or concentrations should be determined by the scientist.	
Positive Control	Jurkat	

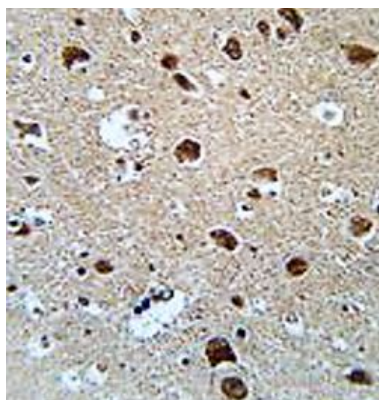
Properties

Form	Liquid
Purification	Purification with Protein A and immunogen peptide.
Buffer	PBS and 0.09% (W/V) Sodium azide
Preservative	0.09% (W/V) Sodium azide
Storage instruction	For continuous use, store undiluted antibody at 2-8°C for up to a week. For long-term storage, aliquot and store at -20°C or below. Storage in frost free freezers is not recommended. Avoid repeated freeze/thaw cycles. Suggest spin the vial prior to opening. The antibody solution should be gently mixed before use.
Note	For laboratory research only, not for drug, diagnostic or other use.

Bioinformation

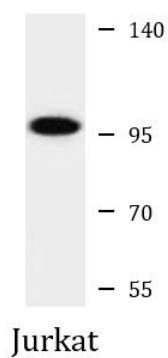
Database links	GeneID: 54812 Human Swiss-port # Q6ULP2 Human
Gene Symbol	AFTPH
Gene Full Name	aftiphilin
Function	May play a role in membrane trafficking. [UniProt]
Research Area	Signaling Transduction antibody
Calculated Mw	102 kDa
Cellular Localization	Cytoplasm. Note=Colocalizes with AP1G1 and clathrin

Images



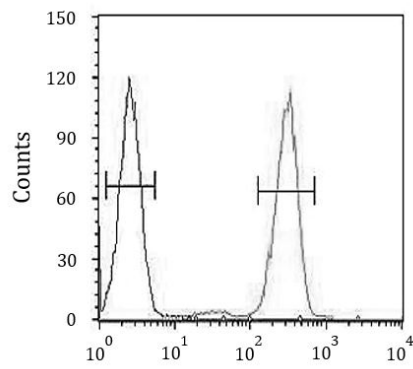
ARG55157 anti-Aftiphilin antibody IHC-P image

Immunohistochemistry: Formalin-fixed and paraffin-embedded Human brain tissue stained with ARG55157 anti-Aftiphilin antibody.



ARG55157 anti-Aftiphilin antibody WB image

Western blot: 35 µg of Jurkat cell lysate stained with ARG55157 anti-Aftiphilin antibody.



ARG55157 anti-Aftiphilin antibody FACS image

Flow Cytometry: HL-60 cells stained with ARG55157 anti-Aftiphilin antibody (right histogram) or without primary antibody control (left histogram), followed by incubation with FITC labelled secondary antibody.