

ARG55166 anti-ABHD14B antibody

Package: 100 µl
Store at: -20°C

Summary

Product Description	Rabbit Polyclonal antibody recognizes ABHD14B
Tested Reactivity	Hu
Predict Reactivity	Bov
Tested Application	FACS, IHC-P, WB
Host	Rabbit
Clonality	Polyclonal
Isotype	IgG
Target Name	ABHD14B
Species	Human
Immunogen	KLH-conjugated synthetic peptide corresponding to aa. 150-179 (C-terminus) of Human ABHD14B.
Conjugation	Un-conjugated
Alternate Names	CIB; Alpha/beta hydrolase domain-containing protein 14B; CCG1-interacting factor B; HEL-S-299; Abhydrolase domain-containing protein 14B; EC 3.-.-.-

Application Instructions

Application table	Application	Dilution
	FACS	1:10 - 1:50
	IHC-P	Assay-dependent
	WB	1:1000
Application Note	* The dilutions indicate recommended starting dilutions and the optimal dilutions or concentrations should be determined by the scientist.	
Positive Control	T47D	

Properties

Form	Liquid
Purification	Purification with Protein A and immunogen peptide.
Buffer	PBS and 0.09% (W/V) Sodium azide
Preservative	0.09% (W/V) Sodium azide
Storage instruction	For continuous use, store undiluted antibody at 2-8°C for up to a week. For long-term storage, aliquot and store at -20°C or below. Storage in frost free freezers is not recommended. Avoid repeated freeze/thaw cycles. Suggest spin the vial prior to opening. The antibody solution should be gently mixed before use.

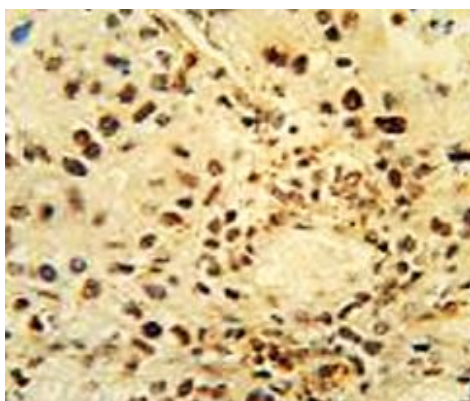
Note

For laboratory research only, not for drug, diagnostic or other use.

Bioinformation

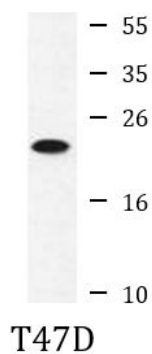
Database links	GeneID: 84836 Human Swiss-port # Q96IU4 Human
Gene Symbol	ABHD14B
Gene Full Name	abhydrolase domain containing 14B
Function	Has hydrolase activity towards p-nitrophenyl butyrate (in vitro). May activate transcription. [UniProt]
Research Area	Cell Biology and Cellular Response antibody
Calculated Mw	22 kDa
Cellular Localization	Cytoplasm. Nucleus. Note=Predominantly cytoplasmic

Images



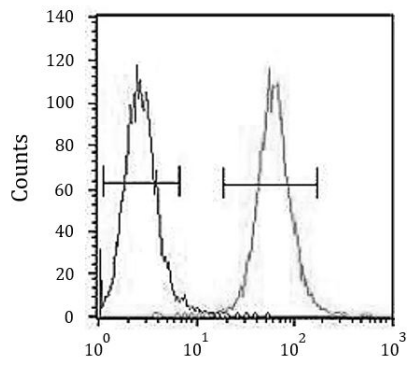
ARG55166 anti-ABHD14B antibody IHC-P image

Immunohistochemistry: Formalin-fixed and paraffin-embedded Human lung carcinoma stained with ARG55166 anti-ABHD14B antibody.



ARG55166 anti-ABHD14B antibody WB image

Western blot: 35 µg of T47D cell lysate stained with ARG55166 anti-ABHD14B antibody.



ARG55166 anti-ABHD14B antibody FACS image

Flow Cytometry: A2058 cells stained with ARG55166 anti-ABHD14B antibody (right histogram) or without primary antibody control (left histogram), followed by incubation with FITC labelled secondary antibody.