

ARG55173 anti-Beclin 1 antibody

Package: 50 µg
Store at: -20°C

Summary

Product Description	Rabbit Polyclonal antibody recognizes Beclin 1
Tested Reactivity	Hu, Ms
Tested Application	ELISA, ICC/IF, WB
Host	Rabbit
Clonality	Polyclonal
Isotype	IgG
Target Name	Beclin 1
Species	Human
Immunogen	Synthetic peptide (16 aa) within the last 50 aa of Human Beclin-1.
Conjugation	Un-conjugated
Alternate Names	BECN1; Beclin 1; VPS30; ATG6; Coiled-Coil Myosin-Like BCL2-Interacting Protein; Beclin 1, Autophagy Related; Beclin-1; Beclin 1 (Coiled-Coil, Moesin-Like BCL2 Interacting Protein); Beclin 1 (Coiled-Coil, Moesin-Like BCL2-Interacting Protein); ATG6 Autophagy Related 6 Homolog (S. Cerevisiae); Testis Secretory Sperm-Binding Protein Li 215e; ATG6 Autophagy Related 6 Homolog; Beclin1-Gamma; Protein GT197; Beclin1-Beta; Beclin1; GT197

Application Instructions

Application table	Application	Dilution
	ELISA	Assay-dependent
	ICC/IF	1 - 2 µg/ml
	WB	0.5 - 2 µg/ml
Application Note	* The dilutions indicate recommended starting dilutions and the optimal dilutions or concentrations should be determined by the scientist.	
Positive Control	A431 Cell Lysate	

Properties

Form	Liquid
Purification	Affinity purification with immunogen.
Buffer	PBS and 0.02% Sodium azide
Preservative	0.02% Sodium azide
Concentration	1 mg/ml
Storage instruction	For continuous use, store undiluted antibody at 2-8°C for up to a week. For long-term storage, aliquot and store at -20°C or below. Storage in frost free freezers is not recommended. Avoid repeated

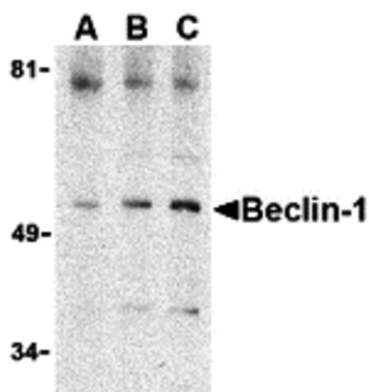
freeze/thaw cycles. Suggest spin the vial prior to opening. The antibody solution should be gently mixed before use.

Note For laboratory research only, not for drug, diagnostic or other use.

Bioinformation

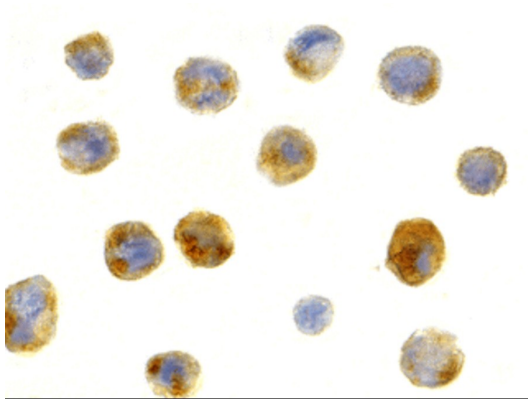
Database links	GeneID: 56208 Mouse GeneID: 8678 Human Swiss-port # O88597 Mouse Swiss-port # Q14457 Human
Gene Symbol	BECN1
Gene Full Name	beclin 1, autophagy related
Background	This gene encodes a protein that regulates autophagy, a catabolic process of degradation induced by starvation. The encoded protein is a component of the phosphatidylinositol-3-kinase (PI3K) complex which mediates vesicle-trafficking processes. This protein is thought to play a role in multiple cellular processes, including tumorigenesis, neurodegeneration and apoptosis. Alternative splicing results in multiple transcript variants. [provided by RefSeq, Sep 2015]
Function	Protects against infection by a neurovirulent strain of Sindbis virus. May play a role in antiviral host defense. [UniProt]
Highlight	Related products: Beclin 1 antibodies ; Beclin 1 Duos / Panels ;
Research Area	Cancer antibody; Cell Death antibody; Gene Regulation antibody; Metabolism antibody; Microbiology and Infectious Disease antibody; Autophagy Study antibody
Calculated Mw	52 kDa
PTM	Acetylation, Isopeptide bond, Phosphoprotein, Ubl conjugation. [UniProt]
Cellular Localization	Cytoplasm, Cytoplasmic vesicle, Endoplasmic reticulum, Endosome, Golgi apparatus, Membrane, Mitochondrion, Nucleus. [UniProt]

Images



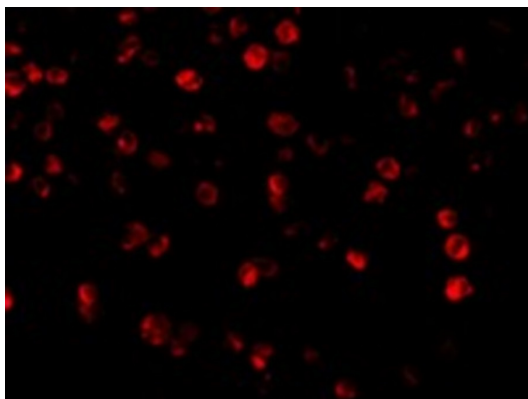
ARG55173 anti-Beclin 1 antibody WB image

Western blot: A431 cell lysate stained with ARG55173 anti-Beclin 1 antibody at (A) 0.5, (B) 1 and (C) 2 ug/ml dilution.



ARG55173 anti-Beclin 1 antibody ICC/IF image

Immunocytochemistry: A431 cells stained with ARG55173 anti-Beclin 1 antibody at 1 ug/ml dilution.



ARG55173 anti-Beclin 1 antibody ICC/IF image

Immunofluorescence: A431 cells stained with ARG55173 anti-Beclin 1 antibody at 2 ug/ml dilution.