

ARG55177 anti-Caspase 12 antibody

Package: 50 µg
Store at: -20°C

Summary

Product Description	Rabbit Polyclonal antibody recognizes Caspase 12
Tested Reactivity	Hu, Ms, Rat
Tested Application	ELISA, ICC/IF, IHC-P, WB
Specificity	This antibody can be used for the detection of both the propeptide and cleaved forms of Caspase-12.
Host	Rabbit
Clonality	Polyclonal
Isotype	IgG
Target Name	Caspase 12
Species	Mouse
Immunogen	Synthetic peptide (16 aa) within aa. 170-220 of Mouse Caspase-12.
Conjugation	Un-conjugated
Alternate Names	Inactive caspase-12; CASP-12; CASP12P1

Application Instructions

Application table	Application	Dilution
	ELISA	Assay-dependent
	ICC/IF	10 µg/ml
	IHC-P	Assay-dependent
	WB	2 µg/ml
Application Note	* The dilutions indicate recommended starting dilutions and the optimal dilutions or concentrations should be determined by the scientist.	
Positive Control	Human Heart Tissue Lysate	

Properties

Form	Liquid
Purification	Affinity purification with immunogen.
Buffer	PBS and 0.02% Sodium azide
Preservative	0.02% Sodium azide
Concentration	1 mg/ml
Storage instruction	For continuous use, store undiluted antibody at 2-8°C for up to a week. For long-term storage, aliquot and store at -20°C or below. Storage in frost free freezers is not recommended. Avoid repeated freeze/thaw cycles. Suggest spin the vial prior to opening. The antibody solution should be gently mixed

before use.

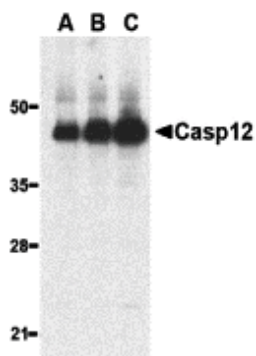
Note

For laboratory research only, not for drug, diagnostic or other use.

Bioinformation

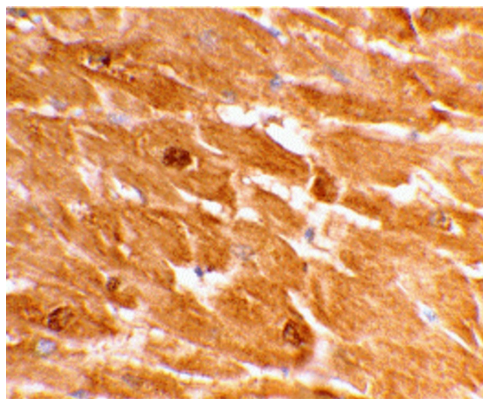
Gene Symbol	Casp12
Gene Full Name	caspase 12
Background	Three distinct signaling pathways lead to programmed cell death (apoptosis). The death receptor and mitochondrion pathways are the mains, in which the key apoptotic proteases capase-8 and caspase-9, respectively, are involved. The endoplasmic reticulum (ER) stress is the third apoptotic pathway and caspase-12 is involved. Caspase-12 is localized to the ER but not to cytoplasm or mitochondrion. Caspase-12 is activated by ER stress, including disruption of ER calcium homeostasis, and mediates ER stress-induced apoptosis. Caspase-12 is co-localized to the ER with several proteins that are involved in Alzheimer's disease including gamma-secretase presenilin and beta-amyloid precursor protein (APP). Caspase-12 mediates cytotoxicity induced by amyloid-beta. Caspase-12 is ubiquitously expressed in mouse tissues.
Function	Involved in the activation cascade of caspases responsible for apoptosis execution. [UniProt]
Highlight	Related products: Caspase12 antibodies ; Anti-Rabbit IgG secondary antibodies ;
Research Area	Cancer antibody; Cell Biology and Cellular Response antibody; Cell Death antibody; Metabolism antibody; Neuroscience antibody
Calculated Mw	39 kDa

Images



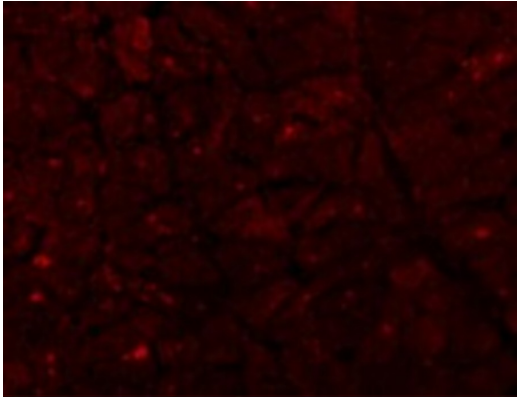
ARG55177 anti-Caspase 12 antibody WB image

Western blot: Human heart lysate stained with ARG55177 anti-Caspase 12 antibody at (A) 0.5, (B) 1, and (C) 2 ug/ml dilution.



ARG55177 anti-Caspase 12 antibody IHC image

Immunohistochemistry: Human heart tissue stained with ARG55177 anti-Caspase 12 antibody at 2 ug/ml dilution.



ARG55177 anti-Caspase 12 antibody IHC image

Immunohistochemistry: Caspase-12 in Human Heart tissue stained with ARG55177 anti-Caspase 12 antibody at 10 ug/ml dilution.