

ARG55187 anti-GRK2 antibody

Package: 50 µl
Store at: -20°C

Summary

Product Description	Rabbit Polyclonal antibody recognizes GRK2
Tested Reactivity	Hu, Ms, Rat
Tested Application	IHC-P, WB
Host	Rabbit
Clonality	Polyclonal
Isotype	IgG
Target Name	GRK2
Species	Human
Immunogen	Recombinant protein of Human GRK2 (NP_001610.2)
Conjugation	Un-conjugated
Alternate Names	BETA-ARK1; Beta-adrenergic receptor kinase 1; GRK2; BARK1; EC 2.7.11.15; Beta-ARK-1; G-protein coupled receptor kinase 2

Application Instructions

Application table	Application	Dilution
	IHC-P	1:50 - 1:200
	WB	1:500 - 1:2000
Application Note	* The dilutions indicate recommended starting dilutions and the optimal dilutions or concentrations should be determined by the scientist.	
Positive Control	Mouse brain and HT-29	

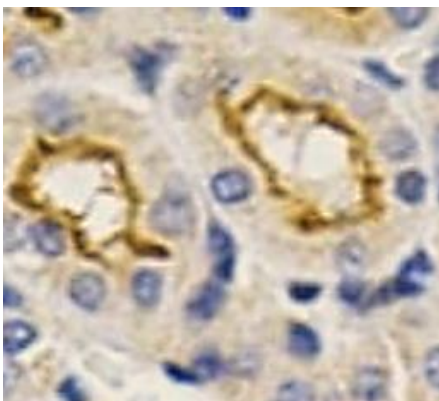
Properties

Form	Liquid
Purification	Affinity purification with immunogen.
Buffer	PBS (pH 7.3), 0.02% Sodium azide and 50% Glycerol
Preservative	0.02% Sodium azide
Stabilizer	50% Glycerol
Storage instruction	For continuous use, store undiluted antibody at 2-8°C for up to a week. For long-term storage, aliquot and store at -20°C. Storage in frost free freezers is not recommended. Avoid repeated freeze/thaw cycles. Suggest spin the vial prior to opening. The antibody solution should be gently mixed before use.
Note	For laboratory research only, not for drug, diagnostic or other use.

Bioinformation

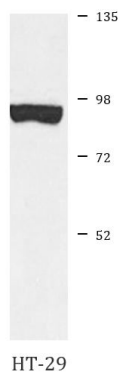
Gene Symbol	ADRBK1
Gene Full Name	adrenergic, beta, receptor kinase 1
Background	The product of this gene phosphorylates the beta-2-adrenergic receptor and appears to mediate agonist-specific desensitization observed at high agonist concentrations. This protein is an ubiquitous cytosolic enzyme that specifically phosphorylates the activated form of the beta-adrenergic and related G-protein-coupled receptors. Abnormal coupling of beta-adrenergic receptor to G protein is involved in the pathogenesis of the failing heart. [provided by RefSeq, Jul 2008]
Function	Specifically phosphorylates the agonist-occupied form of the beta-adrenergic and closely related receptors, probably inducing a desensitization of them. Key regulator of LPAR1 signaling. Competes with RALA for binding to LPAR1 thus affecting the signaling properties of the receptor. Desensitizes LPAR1 and LPAR2 in a phosphorylation-independent manner. [UniProt]
Research Area	Neuroscience antibody; Signaling Transduction antibody
Calculated Mw	80 kDa

Images



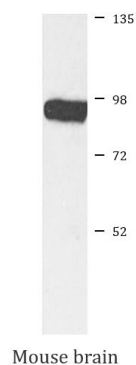
ARG55187 anti-GRK2 antibody IHC-P image

Immunohistochemistry: Paraffin-embedded Mouse kidney stained with ARG55187 anti-GRK2 antibody at 1:200 dilution.



ARG55187 anti-GRK2 antibody WB image

Western blot: HT-29 cell lysate stained with ARG55187 anti-GRK2 antibody.



ARG55187 anti-GRK2 antibody WB image

Western blot: Mouse brain lysate stained with ARG55187 anti-GRK2 antibody.