

ARG55202 anti-DRD4 / Dopamine Receptor D4 antibody

Package: 100 µl
Store at: -20°C

Summary

Product Description	Rabbit Polyclonal antibody recognizes DRD4 / Dopamine Receptor D4
Tested Reactivity	Hu, Ms
Tested Application	IHC-P
Host	Rabbit
Clonality	Polyclonal
Isotype	IgG
Target Name	DRD4 / Dopamine Receptor D4
Species	Human
Immunogen	Synthetic peptide of Human DRD4 (NP_000788.2)
Conjugation	Un-conjugated
Alternate Names	D4DR; D(4) dopamine receptor; D(2C) dopamine receptor; Dopamine D4 receptor

Application Instructions

Application table	Application	Dilution
	IHC-P	Assay-dependent
Application Note	* The dilutions indicate recommended starting dilutions and the optimal dilutions or concentrations should be determined by the scientist.	
Positive Control	Mouse liver	

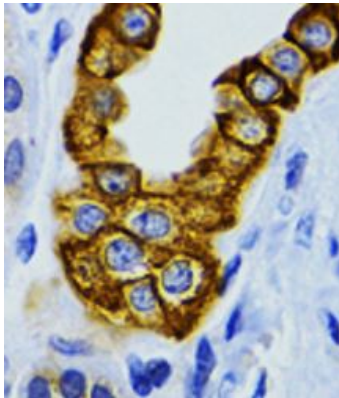
Properties

Form	Liquid
Purification	Affinity purification with immunogen.
Buffer	PBS (pH 7.3), 0.02% Sodium azide and 50% Glycerol
Preservative	0.02% Sodium azide
Stabilizer	50% Glycerol
Storage instruction	For continuous use, store undiluted antibody at 2-8°C for up to a week. For long-term storage, aliquot and store at -20°C. Storage in frost free freezers is not recommended. Avoid repeated freeze/thaw cycles. Suggest spin the vial prior to opening. The antibody solution should be gently mixed before use.
Note	For laboratory research only, not for drug, diagnostic or other use.

Bioinformation

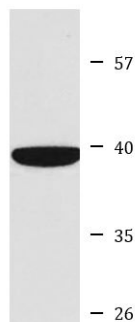
Database links	GeneID: 13491 Mouse GeneID: 1815 Human Swiss-port # P21917 Human Swiss-port # P51436 Mouse
Gene Symbol	DRD4
Gene Full Name	dopamine receptor D4
Background	This gene encodes the D4 subtype of the dopamine receptor. The D4 subtype is a G-protein coupled receptor which inhibits adenylyl cyclase. It is a target for drugs which treat schizophrenia and Parkinson disease. Mutations in this gene have been associated with various behavioral phenotypes, including autonomic nervous system dysfunction, attention deficit/hyperactivity disorder, and the personality trait of novelty seeking. This gene contains a polymorphic number (2-10 copies) of tandem 48 nt repeats; the sequence shown contains four repeats. [provided by RefSeq, Jul 2008]
Function	Dopamine receptor responsible for neuronal signaling in the mesolimbic system of the brain, an area of the brain that regulates emotion and complex behavior. Its activity is mediated by G proteins which inhibit adenylyl cyclase. Modulates the circadian rhythm of contrast sensitivity by regulating the rhythmic expression of NPAS2 in the retinal ganglion cells (By similarity). [UniProt]
Research Area	Neuroscience antibody
Calculated Mw	44 kDa
PTM	Polyubiquitinated by the BCR(KLHL12) E3 ubiquitin ligase complex: polyubiquitination does not lead to degradation of DRD4 protein.

Images



ARG55202 anti-DRD4 / Dopamine Receptor D4 antibody IHC-P image

Immunohistochemistry: Paraffin-embedded Mouse kidney stained with ARG55202 anti-DRD4 / Dopamine Receptor D4 antibody at 1:200 dilution.



Mouse liver

ARG55202 anti-DRD4 / Dopamine Receptor D4 antibody WB image

Western blot: Mouse liver tissue lysate stained with ARG55202 anti-DRD4 / Dopamine Receptor D4 antibody.