

ARG55205 anti-S100A4 antibody

Package: 100 µl, 50 µl
Store at: -20°C

Summary

Product Description	Rabbit Polyclonal antibody recognizes S100A4
Tested Reactivity	Hu, Ms, Rat
Tested Application	ICC/IF, IHC-P, WB
Host	Rabbit
Clonality	Polyclonal
Isotype	IgG
Target Name	S100A4
Species	Human
Immunogen	Recombinant protein of Human S100A4 (Swiss: P26447)
Conjugation	Un-conjugated
Alternate Names	S100 calcium-binding protein A4; Placental calcium-binding protein; 42A; MTS1; FSP1; CAPL; Metastasin; Protein S100-A4; P9KA; 18A2; Protein Mts1; Calvasculin; PEL98

Application Instructions

Application table	Application	Dilution
	ICC/IF	1:50 - 1:200
	IHC-P	Assay-dependent
	WB	1:500 - 1:2000

Application Note * The dilutions indicate recommended starting dilutions and the optimal dilutions or concentrations should be determined by the scientist.

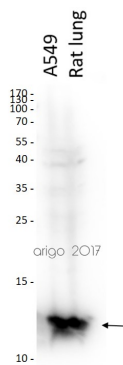
Properties

Form	Liquid
Purification	Affinity purification with immunogen.
Buffer	PBS (pH 7.3), 0.02% Sodium azide and 50% Glycerol
Preservative	0.02% Sodium azide
Stabilizer	50% Glycerol
Storage instruction	For continuous use, store undiluted antibody at 2-8°C for up to a week. For long-term storage, aliquot and store at -20°C. Storage in frost free freezers is not recommended. Avoid repeated freeze/thaw cycles. Suggest spin the vial prior to opening. The antibody solution should be gently mixed before use.
Note	For laboratory research only, not for drug, diagnostic or other use.

Bioinformation

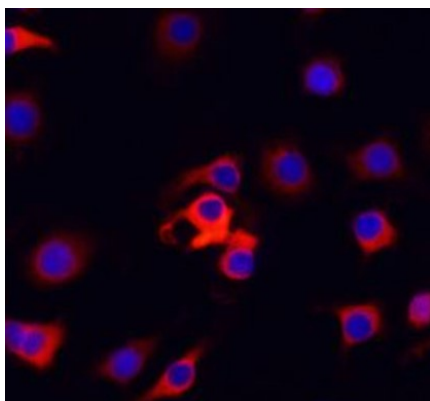
Gene Symbol	S100A4
Gene Full Name	S100 calcium binding protein A4
Background	The protein encoded by this gene is a member of the S100 family of proteins containing 2 EF-hand calcium-binding motifs. S100 proteins are localized in the cytoplasm and/or nucleus of a wide range of cells, and involved in the regulation of a number of cellular processes such as cell cycle progression and differentiation. S100 genes include at least 13 members which are located as a cluster on chromosome 1q21. This protein may function in motility, invasion, and tubulin polymerization. Chromosomal rearrangements and altered expression of this gene have been implicated in tumor metastasis. Multiple alternatively spliced variants, encoding the same protein, have been identified. [provided by RefSeq, Jul 2008]
Highlight	Related Antibody Duos and Panels: ARG30347 CAF Marker Antibody Panel Related products: S100A4 antibodies ; S100A4 Duos / Panels ; Anti-Rabbit IgG secondary antibodies ; Related news: New antibody panels for Myofibroblasts and CAFs
Research Area	Cancer antibody; Cell Biology and Cellular Response antibody; Signaling Transduction antibody
Calculated Mw	12 kDa

Images



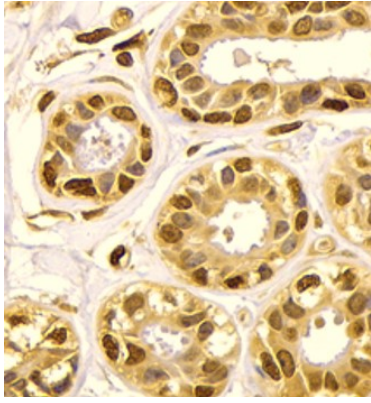
ARG55205 anti-S100A4 antibody WB image

Western blot: 30 µg of A549 and Rat lung lysates stained with ARG55205 anti-S100A4 antibody at 1:500 dilution.



ARG55205 anti-S100A4 antibody ICC/IF image

Immunofluorescence: RAW264.7 cells stained with ARG55205 anti-S100A4 antibody at 1:100 dilution. Blue: DAPI for nuclear staining.



ARG55205 anti-S100A4 antibody IHC-P image

Immunohistochemistry: Paraffin-embedded Human breast stained with ARG55205 anti-S100A4 antibody at 1:100 dilution.