

ARG55224 anti-DCI antibody

Package: 100 µl
Store at: -20°C

Summary

Product Description	Rabbit Polyclonal antibody recognizes DCI
Tested Reactivity	Hu
Tested Application	FACS, IHC-P, WB
Host	Rabbit
Clonality	Polyclonal
Isotype	IgG
Target Name	DCI
Species	Human
Immunogen	KLH-conjugated synthetic peptide corresponding to aa. 275-302 (C-terminus) of Human DCI.
Conjugation	Un-conjugated
Alternate Names	3,2-trans-enoyl-CoA isomerase; DCI; Enoyl-CoA delta isomerase 1, mitochondrial; 3; 2; D3,D2-enoyl-CoA isomerase; Delta; EC 5.3.3.8; Dodecenoyl-CoA isomerase

Application Instructions

Application table	Application	Dilution
	FACS	1:10 - 1:50
	IHC-P	Assay-dependent
	WB	1:1000
Application Note	* The dilutions indicate recommended starting dilutions and the optimal dilutions or concentrations should be determined by the scientist.	
Positive Control	HepG2	

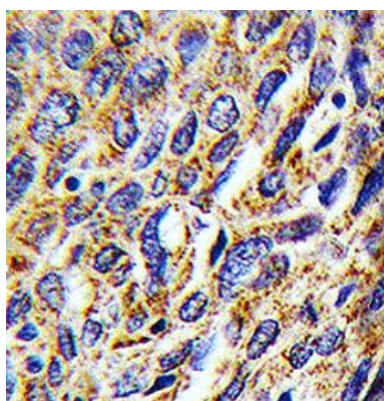
Properties

Form	Liquid
Purification	Purification with Protein A and immunogen peptide.
Buffer	PBS and 0.09% (W/V) Sodium azide
Preservative	0.09% (W/V) Sodium azide
Storage instruction	For continuous use, store undiluted antibody at 2-8°C for up to a week. For long-term storage, aliquot and store at -20°C or below. Storage in frost free freezers is not recommended. Avoid repeated freeze/thaw cycles. Suggest spin the vial prior to opening. The antibody solution should be gently mixed before use.
Note	For laboratory research only, not for drug, diagnostic or other use.

Bioinformation

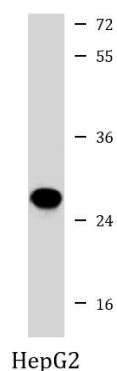
Database links	GeneID: 1632 Human Swiss-port # P42126 Human
Gene Symbol	ECI1
Gene Full Name	enoyl-CoA delta isomerase 1
Background	This gene encodes a member of the hydratase/isomerase superfamily. The protein encoded is a key mitochondrial enzyme involved in beta-oxidation of unsaturated fatty acids. It catalyzes the transformation of 3-cis and 3-trans-enoyl-CoA esters arising during the stepwise degradation of cis-, mono-, and polyunsaturated fatty acids to the 2-trans-enoyl-CoA intermediates. Alternatively spliced transcript variants have been described. [provided by RefSeq, May 2010]
Function	Able to isomerize both 3-cis and 3-trans double bonds into the 2-trans form in a range of enoyl-CoA species. [UniProt]
Research Area	Cancer antibody; Cell Biology and Cellular Response antibody; Controls and Markers antibody; Metabolism antibody; Signaling Transduction antibody
Calculated Mw	33 kDa
Cellular Localization	Mitochondrion matrix.

Images



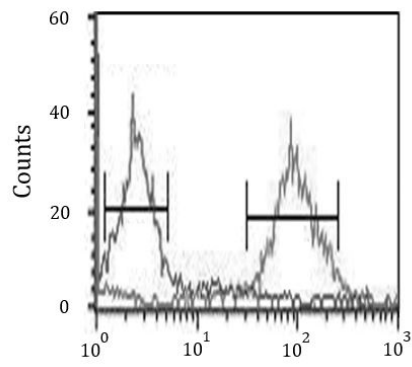
ARG55224 anti-DCI antibody IHC-P image

Immunohistochemistry: Formalin-fixed and paraffin-embedded Human lung carcinoma stained with ARG55224 anti-DCI antibody.



ARG55224 anti-DCI antibody WB image

Western blot: 35 µg of HepG2 cell lysate stained with ARG55224 anti-DCI antibody.



ARG55224 anti-DCI antibody FACS image

Flow Cytometry: MCF-7 cells stained with ARG55224 anti-DCI antibody (right histogram) or without primary antibody control (left histogram), followed by incubation with FITC labelled secondary antibody.