

## ARG55225 anti-DECR1 antibody

Package: 100 µl  
Store at: -20°C

### Summary

|                     |  |
|---------------------|--|
| Product Description | Rabbit Polyclonal antibody recognizes DECR1  |
| Tested Reactivity   | Hu, Ms, Rat  |
| Tested Application  | WB   |
| Host                | Rabbit   |
| Clonality           | Polyclonal   |
| Isotype             | IgG  |
| Target Name         | DECR1  |
| Species             | Human  |
| Immunogen           | KLH-conjugated synthetic peptide corresponding to aa. 241-274 (Center) of Human DECR1.   |
| Conjugation         | Un-conjugated  |
| Alternate Names     | Short chain dehydrogenase/reductase family 18C member 1; 2,4-dienoyl-CoA reductase, mitochondrial; 4-enoyl-CoA reductase [NADPH]; EC 1.3.1.34; NADPH; SDR18C1; 2,4-dienoyl-CoA reductase [NADPH]; DECR |

### Application Instructions

|                   |  |          |
|-------------------|--|----------|
| Application table | Application  | Dilution |
|                   | WB   | 1:1000   |
| Application Note  | * The dilutions indicate recommended starting dilutions and the optimal dilutions or concentrations should be determined by the scientist. |          |
| Positive Control  | Human heart  |          |

### Properties

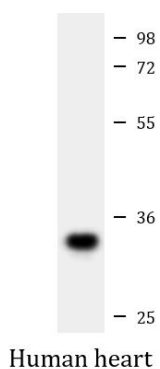
|                     |  |
|---------------------|--|
| Form                | Liquid   |
| Purification        | Purification with Protein A and immunogen peptide.   |
| Buffer              | PBS and 0.09% (W/V) Sodium azide   |
| Preservative        | 0.09% (W/V) Sodium azide   |
| Storage instruction | For continuous use, store undiluted antibody at 2-8°C for up to a week. For long-term storage, aliquot and store at -20°C or below. Storage in frost free freezers is not recommended. Avoid repeated freeze/thaw cycles. Suggest spin the vial prior to opening. The antibody solution should be gently mixed before use. |
| Note                | For laboratory research only, not for drug, diagnostic or other use.   |

### Bioinformation

|                       |   |
|-----------------------|---|
| Gene Symbol           | DECR1   |
| Gene Full Name        | 2,4-dienoyl CoA reductase 1, mitochondrial  |
| Background            | This gene encodes an accessory enzyme which participates in the beta-oxidation and metabolism of unsaturated fatty enoyl-CoA esters. [provided by RefSeq, Jul 2008]   |
| Function              | Auxiliary enzyme of beta-oxidation. It participates in the metabolism of unsaturated fatty enoyl-CoA esters having double bonds in both even- and odd-numbered positions. Catalyzes the NADP-dependent reduction of 2,4-dienoyl-CoA to yield trans-3-enoyl-CoA. [UniProt] |
| Research Area         | Cancer antibody; Metabolism antibody; Signaling Transduction antibody   |
| Calculated Mw         | 36 kDa  |
| Cellular Localization | Mitochondrion.  |

## Images

---



ARG55225 anti-DECR1 antibody WB image

Western blot: 20 µg of Human heart lysate stained with ARG55225 anti-DECR1 antibody at 1:1000 dilution.