

ARG55228
anti-DLK1 antibodyPackage: 100 µl
Store at: -20°C

Summary

Product Description	Rabbit Polyclonal antibody recognizes DLK1
Tested Reactivity	Hu, Ms
Tested Application	FACS, IHC-P, WB
Host	Rabbit
Clonality	Polyclonal
Isotype	IgG
Target Name	DLK1
Species	Human
Immunogen	KLH-conjugated synthetic peptide corresponding to aa. 368-402 (C-terminus) of Human DLK1.
Conjugation	Un-conjugated
Alternate Names	Delta1; ZOG; DLK; FA1; DLK-1; pG2; Pref-1; PREF1; Protein delta homolog 1

Application Instructions

Application table	Application	Dilution
	FACS	1:25
	IHC-P	Assay-dependent
	WB	Assay-dependent
Application Note	* The dilutions indicate recommended starting dilutions and the optimal dilutions or concentrations should be determined by the scientist.	
Positive Control	Mouse skeletal muscle	

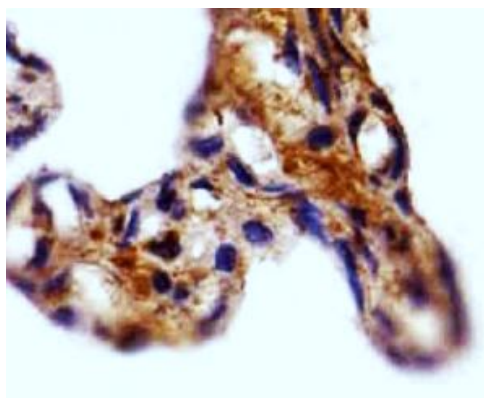
Properties

Form	Liquid
Purification	Purification with Protein A and immunogen peptide.
Buffer	PBS and 0.09% (W/V) Sodium azide
Preservative	0.09% (W/V) Sodium azide
Storage instruction	For continuous use, store undiluted antibody at 2-8°C for up to a week. For long-term storage, aliquot and store at -20°C or below. Storage in frost free freezers is not recommended. Avoid repeated freeze/thaw cycles. Suggest spin the vial prior to opening. The antibody solution should be gently mixed before use.
Note	For laboratory research only, not for drug, diagnostic or other use.

Bioinformation

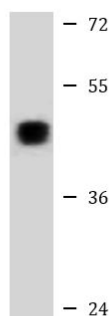
Database links	GeneID: 13386 Mouse GeneID: 8788 Human Swiss-port # P80370 Human Swiss-port # Q09163 Mouse
Gene Symbol	DLK1
Gene Full Name	delta-like 1 homolog (Drosophila)
Background	This gene encodes a transmembrane protein containing six epidermal growth factor repeats. The protein is involved in the differentiation of several cell types, including adipocytes; it is also thought to be a tumor suppressor. It is one of several imprinted genes located in a region of on chr 14q32. Certain mutations in this imprinted region can cause phenotypes similar to maternal and paternal uniparental disomy of chromosome 14 (UPD14). This gene is expressed from the paternal allele. A polymorphism within this gene has been associated with child and adolescent obesity. The mode of inheritance for this polymorphism is polar overdominance; this non-Mendelian inheritance pattern was first described in sheep with the callipyge phenotype, which is characterized by muscle hypertrophy and decreased fat mass. [provided by RefSeq, Mar 2010]
Function	May have a role in neuroendocrine differentiation. [UniProt]
Research Area	Developmental Biology antibody; Neuroscience antibody; Signaling Transduction antibody
Calculated Mw	41 kDa
PTM	N- and O-glycosylated. O-glycosylated with core 1 or possibly core 8 glycans.
Cellular Localization	Membrane; Single-pass type I membrane protein

Images



ARG55228 anti-DLK1 antibody IHC-P image

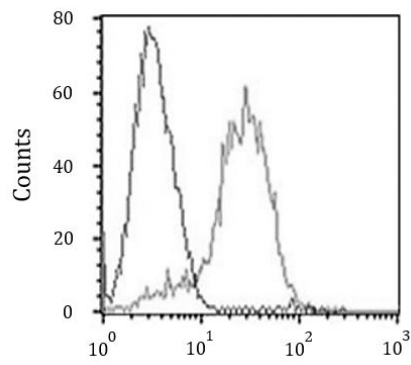
Immunohistochemistry: Paraffin-embedded Human placenta tissue stained with ARG55228 anti-DLK1 antibody at 1:25 dilution.



Mouse skeletal muscle

ARG55228 anti-DLK1 antibody WB image

Western blot: 20 µg of Mouse skeletal muscle lysate stained with ARG55228 anti-DLK1 antibody at 1:1000 dilution.



ARG55228 anti-DLK1 antibody FACS image

Flow Cytometry: HepG2 cells stained with ARG55228 anti-DLK1 antibody (right histogram) at 1:25 dilution or without primary antibodies (left histogram), followed by incubation with Alexa Fluor® 488 labelled secondary antibody.