

ARG55232 anti-H Cadherin antibody

Package: 100 µl
Store at: -20°C

Summary

Product Description	Rabbit Polyclonal antibody recognizes H Cadherin
Tested Reactivity	Hu
Tested Application	FACS, IHC-P, WB
Host	Rabbit
Clonality	Polyclonal
Isotype	IgG
Target Name	H Cadherin
Species	Human
Immunogen	KLH-conjugated synthetic peptide corresponding to aa. 146-174 (N-terminus) of Human H Cadherin.
Conjugation	Un-conjugated
Alternate Names	CDHH; H-cadherin; P105; Cadherin-13; Truncated cadherin; T-cad; Heart cadherin; T-cadherin

Application Instructions

Application table	Application	Dilution
	FACS	1:10 - 1:50
	IHC-P	Assay-dependent
	WB	1:1000
Application Note	* The dilutions indicate recommended starting dilutions and the optimal dilutions or concentrations should be determined by the scientist.	
Positive Control	Human brain	

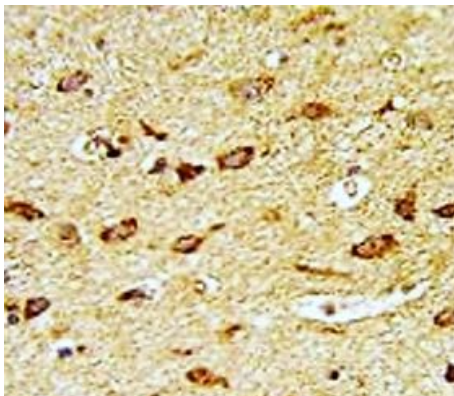
Properties

Form	Liquid
Purification	Purification with Protein A and immunogen peptide.
Buffer	PBS and 0.09% (W/V) Sodium azide
Preservative	0.09% (W/V) Sodium azide
Storage instruction	For continuous use, store undiluted antibody at 2-8°C for up to a week. For long-term storage, aliquot and store at -20°C or below. Storage in frost free freezers is not recommended. Avoid repeated freeze/thaw cycles. Suggest spin the vial prior to opening. The antibody solution should be gently mixed before use.
Note	For laboratory research only, not for drug, diagnostic or other use.

Bioinformation

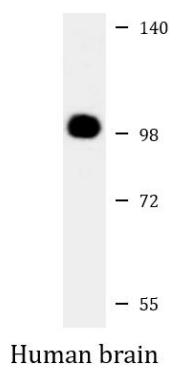
Database links	GeneID: 1012 Human Swiss-port # P55290 Human
Gene Symbol	CDH13
Gene Full Name	cadherin 13
Background	This gene encodes a member of the cadherin superfamily. The encoded protein is localized to the surface of the cell membrane and is anchored by a GPI moiety, rather than by a transmembrane domain. The protein lacks the cytoplasmic domain characteristic of other cadherins, and so is not thought to be a cell-cell adhesion glycoprotein. This protein acts as a negative regulator of axon growth during neural differentiation. It also protects vascular endothelial cells from apoptosis due to oxidative stress, and is associated with resistance to atherosclerosis. The gene is hypermethylated in many types of cancer. Alternative splicing results in multiple transcript variants encoding different isoforms. [provided by RefSeq, May 2011]
Function	Cadherins are calcium-dependent cell adhesion proteins. They preferentially interact with themselves in a homophilic manner in connecting cells; cadherins may thus contribute to the sorting of heterogeneous cell types. May act as a negative regulator of neural cell growth. [UniProt]
Research Area	Cancer antibody; Signaling Transduction antibody
Calculated Mw	78 kDa
Cellular Localization	Cell membrane; Lipid-anchor, GPI-anchor.

Images



ARG55232 anti-H Cadherin antibody IHC-P image

Immunohistochemistry: Formalin-fixed and paraffin-embedded Human brain tissue stained with ARG55232 anti-H Cadherin antibody.



ARG55232 anti-H Cadherin antibody WB image

Western blot: 35 µg of Human brain lysate stained with ARG55232 anti-H Cadherin antibody at 1:1000 dilution.

ARG55232 anti-H Cadherin antibody FACS image

Flow Cytometry: HepG2 cells stained with ARG55232 anti-H Cadherin antibody (bottom histogram) or without primary antibody control (top histogram), followed by incubation with FITC labelled secondary antibody.

