

ARG55255 anti-Cytokeratin 12 antibody

Package: 100 µl
Store at: -20°C

Summary

Product Description	Rabbit Polyclonal antibody recognizes Cytokeratin 12
Tested Reactivity	Hu, Ms, Rat
Tested Application	FACS, IHC-P, WB
Host	Rabbit
Clonality	Polyclonal
Isotype	IgG
Target Name	Cytokeratin 12
Species	Human
Immunogen	KLH-conjugated synthetic peptide corresponding to aa. 442-471 (C-terminus) of Human Cytokeratin 12.
Conjugation	Un-conjugated
Alternate Names	K12; CK-12; Cytokeratin-12; Keratin-12; Keratin, type I cytoskeletal 12

Application Instructions

Application table	Application	Dilution
	FACS	1:10 - 1:50
	IHC-P	1:10 - 1:50
	WB	1:1000
Application Note	* The dilutions indicate recommended starting dilutions and the optimal dilutions or concentrations should be determined by the scientist.	
Positive Control	Mouse eyeball	

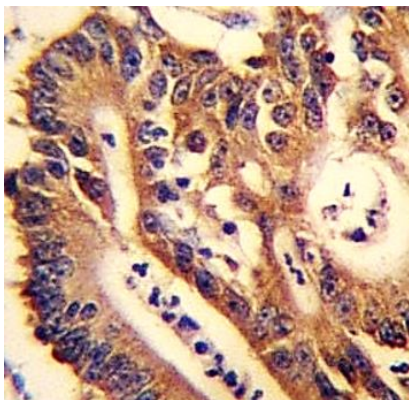
Properties

Form	Liquid
Purification	Purification with Protein A and immunogen peptide
Buffer	PBS and 0.09% (W/V) Sodium azide
Preservative	0.09% (W/V) Sodium azide
Storage instruction	For continuous use, store undiluted antibody at 2-8°C for up to a week. For long-term storage, aliquot and store at -20°C or below. Storage in frost free freezers is not recommended. Avoid repeated freeze/thaw cycles. Suggest spin the vial prior to opening. The antibody solution should be gently mixed before use.
Note	For laboratory research only, not for drug, diagnostic or other use.

Bioinformation

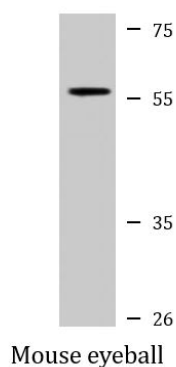
Database links	GeneID: 360625 Rat GeneID: 3859 Human Swiss-port # Q6IFW5 Rat Swiss-port # Q99456 Human
Gene Symbol	KRT12
Gene Full Name	keratin 12, type I
Background	KRT12 encodes the type I intermediate filament chain keratin 12, expressed in corneal epithelia. Mutations in this gene lead to Meesmann corneal dystrophy. [provided by RefSeq, Jul 2008]
Function	May play a unique role in maintaining the normal corneal epithelial function. Together with KRT3, essential for the maintenance of corneal epithelium integrity (By similarity). [UniProt]
Research Area	Controls and Markers antibody; Neuroscience antibody; Signaling Transduction antibody
Calculated Mw	54 kDa

Images



ARG55255 anti-Cytokeratin 12 antibody IHC-P image

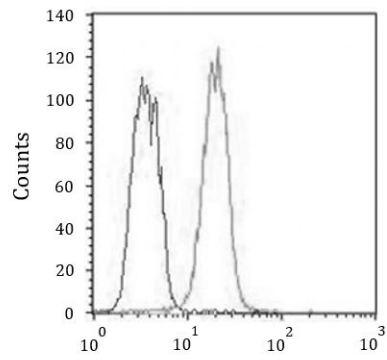
Immunohistochemistry: Formalin-fixed and paraffin-embedded Human colon carcinoma stained with ARG55255 anti-Cytokeratin 12 antibody.



ARG55255 anti-Cytokeratin 12 antibody WB image

Western blot: 20 µg of Mouse eyeball lysate stained with ARG55255 anti-Cytokeratin 12 antibody.

ARG55255 anti-Cytokeratin 12 antibody FACS image



Flow Cytometry: K562 cells stained with ARG55255 anti-Cytokeratin 12 antibody (right histogram) or isotype control antibody (left histogram). The cells were fixed with 4% paraformaldehyde (10 min) and then permeabilized with 90% methanol for 10 min. The cells were then incubated in 2% BSA to block non-specific protein-protein interactions followed by the primary antibody at 1:25 dilution for 60 min at 37°C, then incubated with Alexa Fluor® 488 labelled secondary antibody.