

## ARG55256 anti-IL17 / IL17A antibody

Package: 100 µl  
Store at: -20°C

### Summary

Product Description	Rabbit Polyclonal antibody recognizes IL17 / IL17A
Tested Reactivity	Hu
Tested Application	WB
Host	Rabbit
Clonality	Polyclonal
Isotype	IgG
Target Name	IL17 / IL17A
Species	Human
Immunogen	Recombinant protein of Human IL17A (NP_002181.1).
Conjugation	Un-conjugated
Alternate Names	IL-17A; Interleukin-17A; IL-17; CTLA8; IL17; CTLA-8; Cytotoxic T-lymphocyte-associated antigen 8

### Application Instructions

Application table	Application	Dilution
	WB	1:500 - 1:1000
Application Note	* The dilutions indicate recommended starting dilutions and the optimal dilutions or concentrations should be determined by the scientist.	
Positive Control	Rat liver and Mouse liver.	

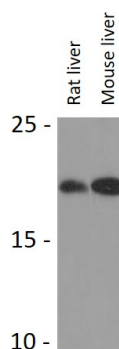
### Properties

Form	Liquid
Purification	Affinity purification with immunogen.
Buffer	PBS (pH 7.3), 0.02% Sodium azide and 50% Glycerol
Preservative	0.02% Sodium azide
Stabilizer	50% Glycerol
Storage instruction	For continuous use, store undiluted antibody at 2-8°C for up to a week. For long-term storage, aliquot and store at -20°C. Storage in frost free freezers is not recommended. Avoid repeated freeze/thaw cycles. Suggest spin the vial prior to opening. The antibody solution should be gently mixed before use.
Note	For laboratory research only, not for drug, diagnostic or other use.

### Bioinformation

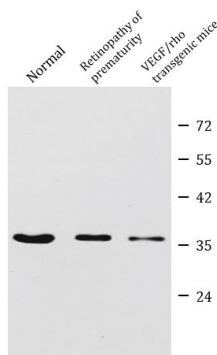
Database links	<a href="#">GeneID: 3605 Human</a> <a href="#">Swiss-port # Q16552 Human</a>
Gene Symbol	IL17A
Gene Full Name	interleukin 17A
Background	The protein encoded by this gene is a proinflammatory cytokine produced by activated T cells. This cytokine regulates the activities of NF-kappaB and mitogen-activated protein kinases. This cytokine can stimulate the expression of IL6 and cyclooxygenase-2 (PTGS2/COX-2), as well as enhance the production of nitric oxide (NO). High levels of this cytokine are associated with several chronic inflammatory diseases including rheumatoid arthritis, psoriasis and multiple sclerosis. [provided by RefSeq, Jul 2008]
Function	Induces stromal cells to produce proinflammatory and hematopoietic cytokines. Enhances the surface expression of ICAM1/intracellular adhesion molecule 1 in fibroblasts. [UniProt]
Highlight	Related products: <a href="#">IL17 antibodies</a> ; <a href="#">IL17 ELISA Kits</a> ; <a href="#">IL17 recombinant proteins</a> ; <a href="#">Anti-Rabbit IgG secondary antibodies</a> ; Related news: <a href="#">HMGB1, a biomarker and therapeutic target in COVID-19</a>
Research Area	Cancer antibody; Immune System antibody
Calculated Mw	18 kDa
PTM	Found both in glycosylated and nonglycosylated forms.

## Images



ARG55256 anti-IL17 / IL17A antibody WB image

Western blot: 25 µg of Rat liver and Mouse liver lysates stained with ARG55256 anti-IL17 / IL17A antibody at 1:1000 dilution.



ARG55256 anti-IL17 / IL17A antibody WB image

Western blot: Extracts of normal (lane 1), retinopathy of prematurity (lane 2) and VEGF/rho transgenic mice (lane 3) stained with ARG55256 anti-IL17 / IL17A antibody.

Expected signal was at 18 kDa, and the 36 kDa signal in figure might be dimer form of IL17 protein.