

ARG55257 anti-Cyclin B1 antibody

Package: 100 µl, 50 µl
Store at: -20°C

Summary

Product Description	Rabbit Polyclonal antibody recognizes Cyclin B1
Tested Reactivity	Hu, Rat
Tested Application	ICC/IF, IHC-P, IP, WB
Host	Rabbit
Clonality	Polyclonal
Isotype	IgG
Target Name	Cyclin B1
Species	Human
Immunogen	Synthetic peptide of Human Cyclin B1 (NP_114172.1).
Conjugation	Un-conjugated
Alternate Names	G2/mitotic-specific cyclin-B1; CCNB

Application Instructions

Application table	Application	Dilution
	ICC/IF	1:50 - 1:200
	IHC-P	1:50 - 1:200
	IP	1:20 - 1:100
	WB	1:500 - 1:3000

Application Note * The dilutions indicate recommended starting dilutions and the optimal dilutions or concentrations should be determined by the scientist.

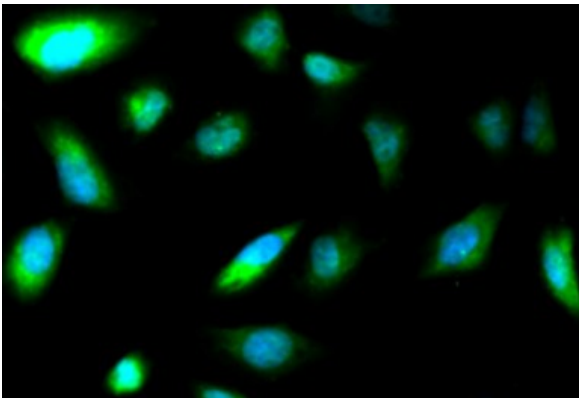
Properties

Form	Liquid
Purification	Affinity purification with immunogen.
Buffer	PBS (pH 7.3), 0.02% Sodium azide and 50% Glycerol
Preservative	0.02% Sodium azide
Stabilizer	50% Glycerol
Storage instruction	For continuous use, store undiluted antibody at 2-8°C for up to a week. For long-term storage, aliquot and store at -20°C. Storage in frost free freezers is not recommended. Avoid repeated freeze/thaw cycles. Suggest spin the vial prior to opening. The antibody solution should be gently mixed before use.
Note	For laboratory research only, not for drug, diagnostic or other use.

Bioinformation

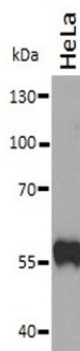
Database links	GeneID: 25203 Rat GeneID: 891 Human Swiss-port # P14635 Human Swiss-port # P30277 Rat
Gene Symbol	CCNB1
Gene Full Name	cyclin B1
Background	The protein encoded by this gene is a regulatory protein involved in mitosis. The gene product complexes with p34(cdc2) to form the maturation-promoting factor (MPF). Two alternative transcripts have been found, a constitutively expressed transcript and a cell cycle-regulated transcript, that is expressed predominantly during G2/M phase. The different transcripts result from the use of alternate transcription initiation sites. [provided by RefSeq, Jul 2008]
Function	Essential for the control of the cell cycle at the G2/M (mitosis) transition. [UniProt]
Research Area	Cancer antibody; Cell Biology and Cellular Response antibody; Gene Regulation antibody; Cell Cycle Study antibody
Calculated Mw	48 kDa
PTM	Ubiquitinated by the SCF(NIPA) complex during interphase, leading to its destruction. Not ubiquitinated during G2/M phases. Phosphorylated by PLK1 at Ser-133 on centrosomes during prophase: phosphorylation by PLK1 does not cause nuclear import. Phosphorylation at Ser-147 was also reported to be mediated by PLK1 but Ser-133 seems to be the primary phosphorylation site.

Images



ARG55257 anti-Cyclin B1 antibody ICC/IF image

Immunofluorescence: A549 cells stained with ARG55257 anti-Cyclin B1 antibody. Blue: DAPI for nuclear staining.



ARG55257 anti-Cyclin B1 antibody WB image

Western blot: HeLa cell lysate stained with ARG55257 anti-Cyclin B1 antibody at 1:1000 dilution.