

ARG55275 anti-KPNA5 / IPOA6 antibody

Package: 50 µg
Store at: -20°C

Summary

Product Description	Rabbit Polyclonal antibody recognizes KPNA5 / IPOA6
Tested Reactivity	Hu, Ms
Tested Application	ICC/IF, IHC-P, WB
Specificity	This antibody is predicted to not cross-react with other Importin alpha family members.
Host	Rabbit
Clonality	Polyclonal
Isotype	IgG
Target Name	KPNA5 / IPOA6
Species	Human
Immunogen	Synthetic peptide (18 aa) within aa. 50-100 of Human KPNA5.
Conjugation	Un-conjugated
Alternate Names	SRP6; IPOA6; Importin subunit alpha-6; Karyopherin subunit alpha-5

Application Instructions

Application table	Application	Dilution
	ICC/IF	5 - 20 µg/ml
	IHC-P	5 µg/ml
	WB	1 µg/ml
Application Note	IHC-P: Antigen retrieval: Heat-induced antigen retrieval. * The dilutions indicate recommended starting dilutions and the optimal dilutions or concentrations should be determined by the scientist.	
Positive Control	EL4 Cell Lysate	

Properties

Form	Liquid
Purification	Affinity purification with immunogen.
Buffer	PBS and 0.02% Sodium azide
Preservative	0.02% Sodium azide
Concentration	1 mg/ml
Storage instruction	For continuous use, store undiluted antibody at 2-8°C for up to a week. For long-term storage, aliquot and store at -20°C or below. Storage in frost free freezers is not recommended. Avoid repeated freeze/thaw cycles. Suggest spin the vial prior to opening. The antibody solution should be gently mixed before use.

Note For laboratory research only, not for drug, diagnostic or other use.

Bioinformation

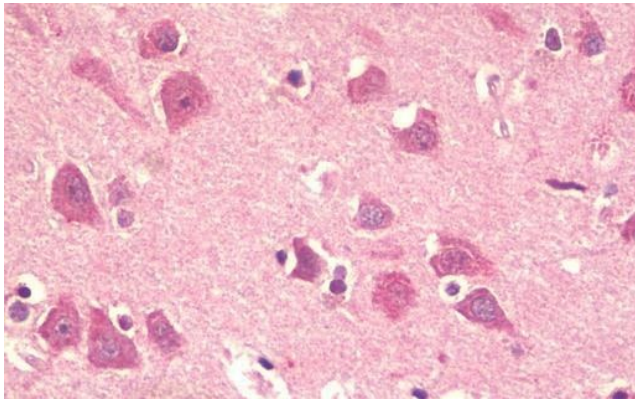
Database links	GeneID: 3841 Human Swiss-port # O15131 Human
Gene Symbol	KPNA5
Gene Full Name	karyopherin alpha 5 (importin alpha 6)
Background	The transport of molecules between the nucleus and the cytoplasm in eukaryotic cells is mediated by the nuclear pore complex (NPC) which consists of 60-100 proteins and is probably 120 million daltons in molecular size. Small molecules (up to 70 kD) can pass through the nuclear pore by nonselective diffusion; larger molecules are transported by an active process. Most nuclear proteins contain short basic amino acid sequences known as nuclear localization signals (NLSs). KPNA5 protein belongs to the importin alpha protein family and is thought to be involved in NLS-dependent protein import into the nucleus. [provided by RefSeq, Jul 2008]
Function	Functions in nuclear protein import as an adapter protein for nuclear receptor KPNB1. Binds specifically and directly to substrates containing either a simple or bipartite NLS motif. Docking of the importin/substrate complex to the nuclear pore complex (NPC) is mediated by KPNB1 through binding to nucleoporin FxFG repeats and the complex is subsequently translocated through the pore by an energy requiring, Ran-dependent mechanism. At the nucleoplasmic side of the NPC, Ran binds to importin-beta and the three components separate and importin-alpha and -beta are re-exported from the nucleus to the cytoplasm where GTP hydrolysis releases Ran from importin. The directionality of nuclear import is thought to be conferred by an asymmetric distribution of the GTP- and GDP-bound forms of Ran between the cytoplasm and nucleus. Mediates nuclear import of STAT1 homodimers and STAT1/STAT2 heterodimers by recognizing non-classical NLSs of STAT1 and STAT2 through ARM repeats 8-9. Recognizes influenza A virus nucleoprotein through ARM repeat 7-9 In vitro, mediates the nuclear import of human cytomegalovirus UL84 by recognizing a non-classical NLS. [UniProt]
Research Area	Signaling Transduction antibody
Calculated Mw	60 kDa

Images



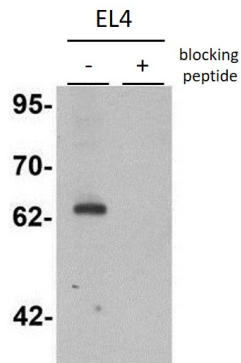
ARG55275 anti-KPNA5 / IPOA6 antibody ICC/IF image

Immunocytochemistry: EL4 cells stained with ARG55275 anti-KPNA5 / IPOA6 antibody at 5 µg/ml dilution.



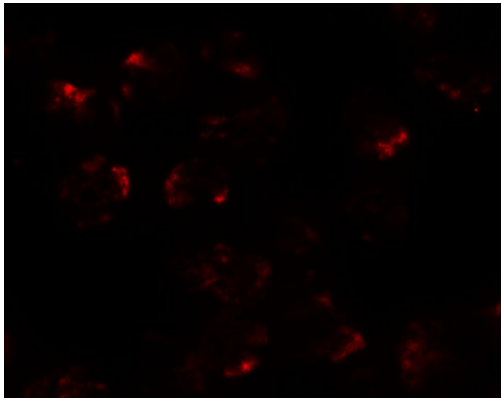
ARG55275 anti-KPNA5 / IPOA6 antibody IHC-P image

Immunohistochemistry: Formalin-fixed and paraffin-embedded Human brain (cortex) stained with ARG55275 anti-KPNA5 / IPOA6 antibody at 5 µg/ml dilution. Antigen retrieval: Heat-induced antigen retrieval.



ARG55275 anti-KPNA5 / IPOA6 antibody WB image

Western blot: EL4 cell lysate stained with ARG55275 anti-KPNA5 / IPOA6 antibody at 1 µg/ml dilution in the absence and the presence of blocking peptide.



ARG55275 anti-KPNA5 / IPOA6 antibody ICC/IF image

Immunofluorescence: EL4 cells stained with ARG55275 anti-KPNA5 / IPOA6 antibody at 20 µg/ml dilution.