

## ARG55280 Goat anti-Rabbit IgG antibody (FITC), pre-adsorbed

Package: 1 ml  
Store at: 4°C

### Summary

Product Description	FITC-conjugated Goat Polyclonal antibody recognizes Rabbit IgG
Tested Reactivity	Rb
Tested Application	ELISA, FACS, FLISA, ICC/IF, IHC-Fr, IHC-P, WB
Specificity	Reacts with the heavy chain of rabbit IgG
Host	Goat
Clonality	Polyclonal
Isotype	IgG
Target Name	IgG
Species	Rabbit
Conjugation	FITC

### Application Instructions

Pre Adsorbed Rabbit IgM.

#### Application table

Application	Dilution
ELISA	Assay-dependent
FACS	Assay-dependent
FLISA	1:100 - 1:400
ICC/IF	Assay-dependent
IHC-Fr	Assay-dependent
IHC-P	Assay-dependent
WB	Assay-dependent

**Application Note** \* The dilutions indicate recommended starting dilutions and the optimal dilutions or concentrations should be determined by the scientist.

### Properties

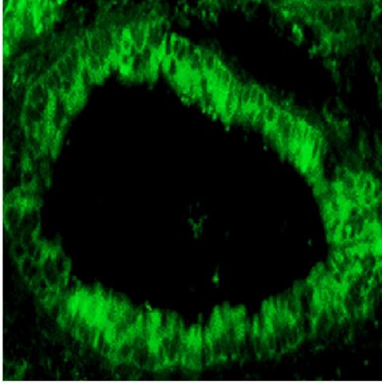
Form	Liquid
Purification	Affinity purification with immunogen.
Buffer	PBS and 0.1% Sodium azide.
Preservative	0.1% Sodium azide
Concentration	1 mg/ml
Storage instruction	Aliquot and store in the dark at 2-8°C. Keep protected from prolonged exposure to light. Avoid

repeated freeze/thaw cycles. Suggest spin the vial prior to opening. The antibody solution should be gently mixed before use.

Note

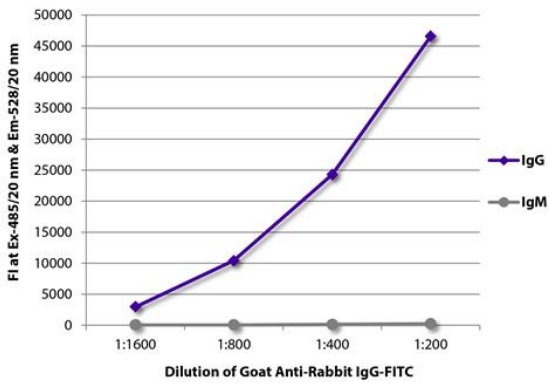
For laboratory research only, not for drug, diagnostic or other use.

## Images



ARG55280 Goat anti-Rabbit IgG antibody (FITC), pre-adsorbed IHC-Fr image

Immunohistochemistry: Frozen section of Mouse lung tissue post sensitization with house dust mite extract followed by specific immunotherapy treatment via immunization with house dust mite extract was stained with ARG55280 Goat anti-Rabbit IgG antibody (FITC), pre-adsorbed.



ARG55280 Goat anti-Rabbit IgG antibody (FITC), pre-adsorbed FLISA image

FLISA: FLISA plate was coated with purified Rabbit IgG and IgM. Immunoglobulins were detected with serially diluted ARG55280 Goat anti-Rabbit IgG antibody (FITC), pre-adsorbed.