

ARG55288
anti-ALDH1B1 antibodyPackage: 100 µl
Store at: -20°C

Summary

Product Description	Rabbit Polyclonal antibody recognizes ALDH1B1
Tested Reactivity	Hu, Ms, Rat
Tested Application	ICC/IF, WB
Host	Rabbit
Clonality	Polyclonal
Isotype	IgG
Target Name	ALDH1B1
Species	Human
Immunogen	Recombinant protein of Human ALDH1B1 (NP_000683.3)
Conjugation	Un-conjugated
Alternate Names	Aldehyde dehydrogenase family 1 member B1; ALDHX; EC 1.2.1.3; ALDH5; Aldehyde dehydrogenase X, mitochondrial; Aldehyde dehydrogenase 5

Application Instructions

Application table	Application	Dilution
	ICC/IF	1:50 - 1:200
	WB	1:500 - 1:2000
Application Note	* The dilutions indicate recommended starting dilutions and the optimal dilutions or concentrations should be determined by the scientist.	
Positive Control	HepG2	

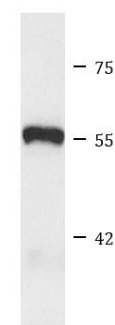
Properties

Form	Liquid
Purification	Affinity purification with immunogen.
Buffer	PBS (pH 7.3), 0.02% Sodium azide and 50% Glycerol
Preservative	0.02% Sodium azide
Stabilizer	50% Glycerol
Storage instruction	For continuous use, store undiluted antibody at 2-8°C for up to a week. For long-term storage, aliquot and store at -20°C. Storage in frost free freezers is not recommended. Avoid repeated freeze/thaw cycles. Suggest spin the vial prior to opening. The antibody solution should be gently mixed before use.
Note	For laboratory research only, not for drug, diagnostic or other use.

Bioinformation

Gene Symbol	ALDH1B1
Gene Full Name	aldehyde dehydrogenase 1 family, member B1
Background	This protein belongs to the aldehyde dehydrogenases family of proteins. Aldehyde dehydrogenase is the second enzyme of the major oxidative pathway of alcohol metabolism. This gene does not contain introns in the coding sequence. The variation of this locus may affect the development of alcohol-related problems. [provided by RefSeq, Jul 2008]
Function	ALDHs play a major role in the detoxification of alcohol-derived acetaldehyde. They are involved in the metabolism of corticosteroids, biogenic amines, neurotransmitters, and lipid peroxidation. [UniProt]
Research Area	Metabolism antibody; Signaling Transduction antibody
Calculated Mw	57 kDa

Images



HepG2

ARG55288 anti-ALDH1B1 antibody WB image

Western blot: HepG2 cell lysate stained with ARG55288 anti-ALDH1B1 antibody.