

ARG55307
anti-CRKL antibodyPackage: 100 µl
Store at: -20°C**Summary**

Product Description	Rabbit Polyclonal antibody recognizes CRKL
Tested Reactivity	Hu, Ms
Tested Application	WB
Host	Rabbit
Clonality	Polyclonal
Isotype	IgG
Target Name	CRKL
Species	Human
Immunogen	Synthetic peptide of Human CRKL (NP_005198.1)
Conjugation	Un-conjugated
Alternate Names	Crk-like protein

Application Instructions

Application table	Application	Dilution
	WB	1:500 - 1:2000
Application Note	* The dilutions indicate recommended starting dilutions and the optimal dilutions or concentrations should be determined by the scientist.	
Positive Control	Mouse brain and HeLa	
Observed Size	~ 37 kDa	

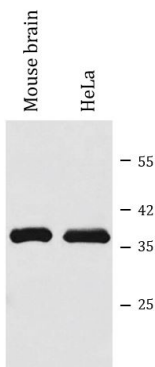
Properties

Form	Liquid
Purification	Affinity purification with immunogen.
Buffer	PBS (pH 7.3), 0.02% Sodium azide and 50% Glycerol
Preservative	0.02% Sodium azide
Stabilizer	50% Glycerol
Storage instruction	For continuous use, store undiluted antibody at 2-8°C for up to a week. For long-term storage, aliquot and store at -20°C. Storage in frost free freezers is not recommended. Avoid repeated freeze/thaw cycles. Suggest spin the vial prior to opening. The antibody solution should be gently mixed before use.
Note	For laboratory research only, not for drug, diagnostic or other use.

Bioinformation

Database links	GeneID: 12929 Mouse GeneID: 1399 Human Swiss-port # P46109 Human Swiss-port # P47941 Mouse
Gene Symbol	CRKL
Gene Full Name	v-crk avian sarcoma virus CT10 oncogene homolog-like
Background	This gene encodes a protein kinase containing SH2 and SH3 (src homology) domains which has been shown to activate the RAS and JUN kinase signaling pathways and transform fibroblasts in a RAS-dependent fashion. It is a substrate of the BCR-ABL tyrosine kinase, plays a role in fibroblast transformation by BCR-ABL, and may be oncogenic.[provided by RefSeq, Jan 2009]
Function	May mediate the transduction of intracellular signals. [UniProt]
Research Area	Cancer antibody; Gene Regulation antibody; Neuroscience antibody; Signaling Transduction antibody
Calculated Mw	34 kDa

Images



ARG55307 anti-CRKL antibody WB image

Western blot: Mouse brain and HeLa cell lysates stained with ARG55307 anti-CRKL antibody.