

## ARG55308 anti-CK1 epsilon antibody

Package: 50 µl  
Store at: -20°C

### Summary

Product Description	Rabbit Polyclonal antibody recognizes CK1 epsilon
Tested Reactivity	Hu, Ms, Rat
Tested Application	ICC/IF, IHC-P, WB
Host	Rabbit
Clonality	Polyclonal
Isotype	IgG
Target Name	CK1 epsilon
Species	Human
Immunogen	Recombinant protein of Human CSNK1E
Conjugation	Un-conjugated
Alternate Names	tau; CK1epsilon; Casein kinase I isoform epsilon; A1426939; CK1e; CKI-epsilon; AW457082; AI551861; EC 2.7.11.1; KC1epsilon

### Application Instructions

Application table	Application	Dilution
	ICC/IF	1:50 - 1:200
	IHC-P	1:50 - 1:200
	WB	1:500 - 1:2000
Application Note	* The dilutions indicate recommended starting dilutions and the optimal dilutions or concentrations should be determined by the scientist.	
Positive Control	293T	

### Properties

Form	Liquid
Purification	Affinity purification with immunogen.
Buffer	PBS (pH 7.3), 0.02% Sodium azide and 50% Glycerol
Preservative	0.02% Sodium azide
Stabilizer	50% Glycerol
Storage instruction	For continuous use, store undiluted antibody at 2-8°C for up to a week. For long-term storage, aliquot and store at -20°C. Storage in frost free freezers is not recommended. Avoid repeated freeze/thaw cycles. Suggest spin the vial prior to opening. The antibody solution should be gently mixed before use.
Note	For laboratory research only, not for drug, diagnostic or other use.

## Bioinformation

---

### Database links

[GeneID: 1454 Human](#)

[GeneID: 27373 Mouse](#)

[Swiss-port # P49674 Human](#)

[Swiss-port # Q9JMK2 Mouse](#)

### Gene Symbol

CSNK1E

### Gene Full Name

casein kinase 1, epsilon

### Background

The protein encoded by this gene is a serine/threonine protein kinase and a member of the casein kinase I protein family, whose members have been implicated in the control of cytoplasmic and nuclear processes, including DNA replication and repair. The encoded protein is found in the cytoplasm as a monomer and can phosphorylate a variety of proteins, including itself. This protein has been shown to phosphorylate period, a circadian rhythm protein. Two transcript variants encoding the same protein have been found for this gene. [provided by RefSeq, Feb 2014]

### Function

Casein kinases are operationally defined by their preferential utilization of acidic proteins such as caseins as substrates. Can phosphorylate a large number of proteins. Participates in Wnt signaling. Phosphorylates DVL1. Central component of the circadian clock. In balance with PP1, determines the circadian period length, through the regulation of the speed and rhythmicity of PER1 and PER2 phosphorylation. Controls PER1 and PER2 nuclear transport and degradation. Inhibits cytokine-induced granulocytic differentiation. [UniProt]

### Research Area

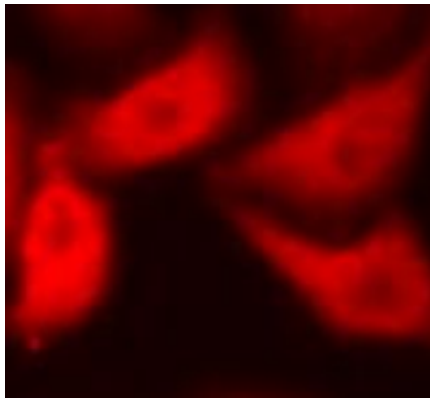
Signaling Transduction antibody

### Calculated Mw

47 kDa

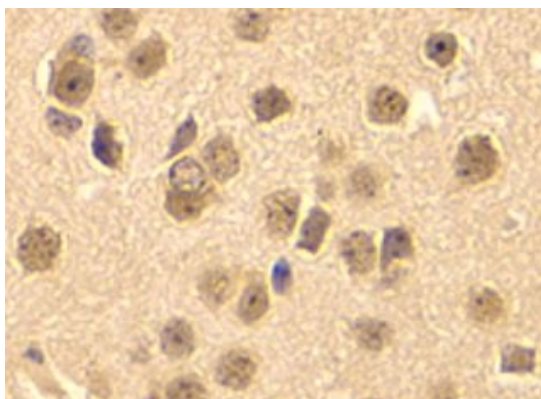
## Images

---



ARG55308 anti-CK1 epsilon antibody ICC/IF image

Immunofluorescence: HeLa cells stained with ARG55308 anti-CK1 epsilon antibody.



ARG55308 anti-CK1 epsilon antibody IHC-P image

Immunohistochemistry: Paraffin-embedded Mouse brain stained with ARG55308 anti-CK1 epsilon antibody at 1:200 dilution.

ARG55308 anti-CK1 epsilon antibody WB image

Western blot: 293T cell lysate stained with ARG55308 anti-CK1 epsilon antibody.

