

ARG55356 anti-AMPH / Amphiphysin antibody

Package: 100 µl
Store at: -20°C

Summary

Product Description	Rabbit Polyclonal antibody recognizes AMPH / Amphiphysin
Tested Reactivity	Hu
Tested Application	IHC-P, WB
Host	Rabbit
Clonality	Polyclonal
Isotype	IgG
Target Name	AMPH / Amphiphysin
Species	Human
Immunogen	KLH-conjugated synthetic peptide corresponding to aa. 336-370 (Center) of Human AMPH.
Conjugation	Un-conjugated
Alternate Names	Amphiphysin; AMPH1

Application Instructions

Application table	Application	Dilution
	IHC-P	1:25
	WB	1:1000
Application Note	IHC-P: Antigen Retrieval: Heat mediation was performed in Citrate buffer (pH 6.0). * The dilutions indicate recommended starting dilutions and the optimal dilutions or concentrations should be determined by the scientist.	
Positive Control	Human brain	

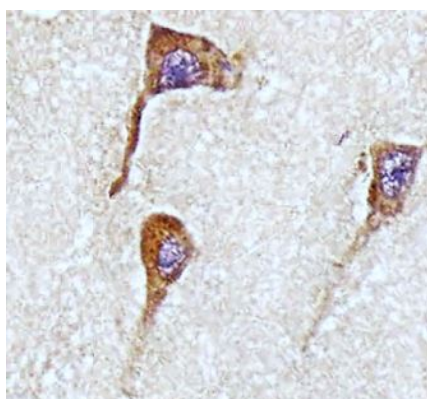
Properties

Form	Liquid
Purification	Purification with Protein A and immunogen peptide.
Buffer	PBS and 0.09% (W/V) Sodium azide
Preservative	0.09% (W/V) Sodium azide
Storage instruction	For continuous use, store undiluted antibody at 2-8°C for up to a week. For long-term storage, aliquot and store at -20°C or below. Storage in frost free freezers is not recommended. Avoid repeated freeze/thaw cycles. Suggest spin the vial prior to opening. The antibody solution should be gently mixed before use.
Note	For laboratory research only, not for drug, diagnostic or other use.

Bioinformation

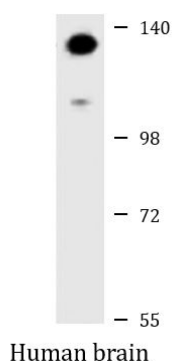
Database links	GeneID: 273 Human Swiss-port # P49418 Human
Gene Symbol	AMPH
Gene Full Name	amphiphysin
Background	This gene encodes a protein associated with the cytoplasmic surface of synaptic vesicles. A subset of patients with stiff-man syndrome who were also affected by breast cancer are positive for autoantibodies against this protein. Alternate splicing of this gene results in two transcript variants encoding different isoforms. Additional splice variants have been described, but their full length sequences have not been determined. A pseudogene of this gene is found on chromosome 11.[provided by RefSeq, Nov 2010]
Function	May participate in mechanisms of regulated exocytosis in synapses and certain endocrine cell types. May control the properties of the membrane associated cytoskeleton. [UniProt]
Research Area	Immune System antibody; Neuroscience antibody
Calculated Mw	76 kDa
Cellular Localization	Cytoplasmic vesicle, secretory vesicle, synaptic vesicle membrane; Peripheral membrane protein; Cytoplasmic side. Cytoplasm, cytoskeleton

Images



ARG55356 anti-AMPH / Amphiphysin antibody IHC-P image

Immunohistochemistry: Paraformaldehyde-fixed and paraffin-embedded Human brain tissue. Tissue was blocked with 3% BSA for 0.5 hour at room temperature. Antigen Retrieval: Heat mediation was performed in Citrate buffer (pH 6.0). Samples were stained with ARG55356 anti-AMPH / Amphiphysin antibody at 1:25 dilution for 1 hour at 37°C.



ARG55356 anti-AMPH / Amphiphysin antibody WB image

Western blot: 20 µg of Human brain lysate stained with ARG55356 anti-AMPH / Amphiphysin antibody at 1:1000 dilution.