

ARG55364 anti-ETFA antibody

Package: 100 µl
Store at: -20°C

Summary

Product Description	Rabbit Polyclonal antibody recognizes ETFA
Tested Reactivity	Hu, Ms
Tested Application	ICC/IF, WB
Host	Rabbit
Clonality	Polyclonal
Isotype	IgG
Target Name	ETFA
Species	Human
Immunogen	KLH-conjugated synthetic peptide corresponding to aa. 192-226 (Center) of Human ETFA.
Conjugation	Un-conjugated
Alternate Names	Electron transfer flavoprotein subunit alpha, mitochondrial; MADD; EMA; GA2; Alpha-ETF

Application Instructions

Application table	Application	Dilution
	ICC/IF	1:25
	WB	1:1000
Application Note	* The dilutions indicate recommended starting dilutions and the optimal dilutions or concentrations should be determined by the scientist.	
Positive Control	A431	

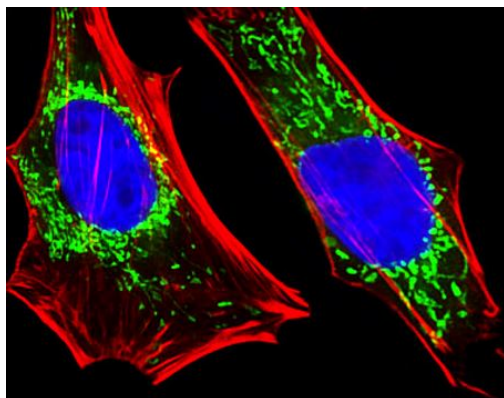
Properties

Form	Liquid
Purification	Purification with Protein A and immunogen peptide.
Buffer	PBS and 0.09% (W/V) Sodium azide
Preservative	0.09% (W/V) Sodium azide
Storage instruction	For continuous use, store undiluted antibody at 2-8°C for up to a week. For long-term storage, aliquot and store at -20°C or below. Storage in frost free freezers is not recommended. Avoid repeated freeze/thaw cycles. Suggest spin the vial prior to opening. The antibody solution should be gently mixed before use.
Note	For laboratory research only, not for drug, diagnostic or other use.

Bioinformation

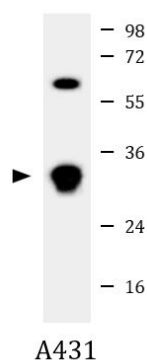
Database links	GeneID: 110842 Mouse
	GeneID: 2108 Human
	Swiss-port # P13804 Human
	Swiss-port # Q99LC5 Mouse
Gene Symbol	ETFA
Gene Full Name	electron-transfer-flavoprotein, alpha polypeptide
Background	ETFA participates in catalyzing the initial step of the mitochondrial fatty acid beta-oxidation. It shuttles electrons between primary flavoprotein dehydrogenases and the membrane-bound electron transfer flavoprotein ubiquinone oxidoreductase. Defects in electron-transfer-flavoprotein have been implicated in type II glutaricaciduria in which multiple acyl-CoA dehydrogenase deficiencies result in large excretion of glutaric, lactic, ethylmalonic, butyric, isobutyric, 2-methyl-butyric, and isovaleric acids. Two transcript variants encoding different isoforms have been found for this gene. [provided by RefSeq, Jul 2008]
Function	The electron transfer flavoprotein serves as a specific electron acceptor for several dehydrogenases, including five acyl-CoA dehydrogenases, glutaryl-CoA and sarcosine dehydrogenase. It transfers the electrons to the main mitochondrial respiratory chain via ETF-ubiquinone oxidoreductase (ETF dehydrogenase). [UniProt]
Research Area	Cancer antibody; Metabolism antibody; Signaling Transduction antibody
Calculated Mw	35 kDa
PTM	The N-terminus is blocked.
Cellular Localization	Mitochondrion matrix.

Images



ARG55364 anti-ETFA antibody ICC/IF image

Immunofluorescence: HeLa cells stained with ARG55364 anti-ETFA antibody (green) at 1:25 dilution. Cytoplasmic actin was counterstained with Alexa Fluor® 555 conjugated with Phalloidin (red). DAPI (blue) for nuclear staining.



ARG55364 anti-ETFA antibody WB image

Western blot: 35 µg of A431 cell lysate stained with ARG55364 anti-ETFA antibody at 1:1000 dilution.