

ARG55383 anti-Myelin Protein zero antibody

Package: 100 µl
Store at: -20°C

Summary

Product Description	Rabbit Polyclonal antibody recognizes Myelin Protein zero
Tested Reactivity	Hu
Tested Application	FACS, IHC-P, WB
Host	Rabbit
Clonality	Polyclonal
Isotype	IgG
Target Name	Myelin Protein zero
Species	Human
Immunogen	KLH-conjugated synthetic peptide corresponding to aa. 186-215 (C-terminus) of Human Myelin Protein zero.
Conjugation	Un-conjugated
Alternate Names	CMT2J; P0; Myelin peripheral protein; CMTDID; HMSNIB; Myelin protein zero; CMT1B; CHM; DSS; CMTD13; CMT2I; CMT4E; MPP; CMT1; Myelin protein P0

Application Instructions

Application table	Application	Dilution
	FACS	1:10 - 1:50
	IHC-P	1:50 - 1:100
	WB	1:1000
Application Note	* The dilutions indicate recommended starting dilutions and the optimal dilutions or concentrations should be determined by the scientist.	
Positive Control	CEM	

Properties

Form	Liquid
Purification	Purification with Protein A and immunogen peptide.
Buffer	PBS and 0.09% (W/V) Sodium azide
Preservative	0.09% (W/V) Sodium azide
Storage instruction	For continuous use, store undiluted antibody at 2-8°C for up to a week. For long-term storage, aliquot and store at -20°C or below. Storage in frost free freezers is not recommended. Avoid repeated freeze/thaw cycles. Suggest spin the vial prior to opening. The antibody solution should be gently mixed before use.
Note	For laboratory research only, not for drug, diagnostic or other use.

Bioinformation

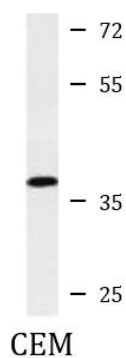
Database links	GeneID: 4359 Human Swiss-port # P25189 Human
Gene Symbol	MPZ
Gene Full Name	myelin protein zero
Background	This gene encodes a major structural protein of peripheral myelin. Mutations in this gene result in the autosomal dominant form of Charcot-Marie-Tooth disease type 1 and other polyneuropathies. [provided by RefSeq, Apr 2010]
Function	Creation of an extracellular membrane face which guides the wrapping process and ultimately compacts adjacent lamellae. [UniProt]
Research Area	Neuroscience antibody
Calculated Mw	28 kDa
PTM	N-glycosylated; contains sulfate-substituted glycan.
Cellular Localization	Cell membrane; Single-pass type I membrane protein

Images



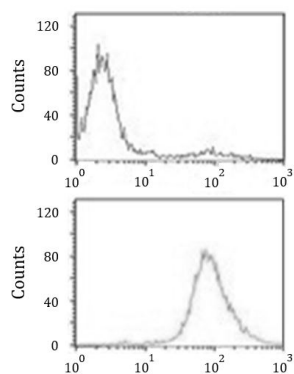
ARG55383 anti-Myelin Protein zero antibody IHC-P image

Immunohistochemistry: Formalin-fixed and paraffin-embedded Human brain tissue stained with ARG55383 anti-Myelin Protein zero antibody.



ARG55383 anti-Myelin Protein zero antibody WB image

Western blot: 35 µg of CEM cell lysate stained with ARG55383 anti-Myelin Protein zero antibody.



ARG55383 anti-Myelin Protein zero antibody FACS image

Flow Cytometry: CEM cells stained with ARG55383 anti-Myelin Protein zero antibody (bottom histogram) or without primary antibody control (top histogram), followed by incubation with FITC labelled secondary antibody.