

## ARG55397 anti-MART1 / Melan A antibody

Package: 100 µl  
Store at: -20°C

### Summary

Product Description	Rabbit Polyclonal antibody recognizes MART1 / Melan A
Tested Reactivity	Hu
Tested Application	FACS, WB
Host	Rabbit
Clonality	Polyclonal
Isotype	IgG
Target Name	MART1 / Melan A
Species	Human
Immunogen	KLH-conjugated synthetic peptide corresponding to aa. 34-60 (Center) of Human MART1 / Melan A.
Conjugation	Un-conjugated
Alternate Names	MART-1; MART1; Protein Melan-A; Antigen SK29-AA; Antigen LB39-AA; Melanoma antigen recognized by T-cells 1

### Application Instructions

Application table	Application	Dilution
	FACS	1:10 - 1:50
	WB	1:1000
Application Note	* The dilutions indicate recommended starting dilutions and the optimal dilutions or concentrations should be determined by the scientist.	
Positive Control	HL-60	

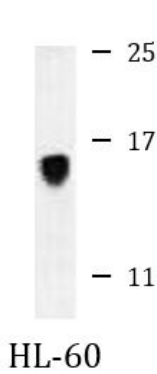
### Properties

Form	Liquid
Purification	Purification with Protein A and immunogen peptide.
Buffer	PBS and 0.09% (W/V) Sodium azide
Preservative	0.09% (W/V) Sodium azide
Storage instruction	For continuous use, store undiluted antibody at 2-8°C for up to a week. For long-term storage, aliquot and store at -20°C or below. Storage in frost free freezers is not recommended. Avoid repeated freeze/thaw cycles. Suggest spin the vial prior to opening. The antibody solution should be gently mixed before use.
Note	For laboratory research only, not for drug, diagnostic or other use.

Bioinformation

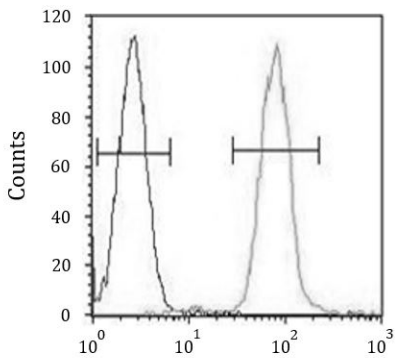
Database links	<a href="#">GeneID: 2315 Human</a> <a href="#">Swiss-port # Q16655 Human</a>
Gene Symbol	MLANA
Gene Full Name	melan-A
Function	Involved in melanosome biogenesis by ensuring the stability of GPR143. Plays a vital role in the expression, stability, trafficking, and processing of melanocyte protein PMEL, which is critical to the formation of stage II melanosomes. [UniProt]
Research Area	Cancer antibody; Controls and Markers antibody
Calculated Mw	13 kDa
PTM	Acylated.

Images



ARG55397 anti-MART1 / Melan A antibody WB image

Western blot: 35 µg of HL-60 cell lysate stained with ARG55397 anti-MART1 / Melan A antibody.



ARG55397 anti-MART1 / Melan A antibody FACS image

Flow Cytometry: HL-60 cells stained with ARG55397 anti-MART1 / Melan A antibody (right histogram) or without primary antibody control (left histogram), followed by incubation with FITC labelled secondary antibody.