

ARG55416 anti-GOLPH2 antibody

Package: 50 µg
Store at: -20°C

Summary

Product Description	Rabbit Polyclonal antibody recognizes GOLPH2
Tested Reactivity	Rat
Predict Reactivity	Hu, Ms
Tested Application	IHC-P, WB
Host	Rabbit
Clonality	Polyclonal
Isotype	IgG
Target Name	GOLPH2
Species	Human
Immunogen	Synthetic peptide (18 aa) within aa. 130-180 of Human GOLPH2.
Conjugation	Un-conjugated
Alternate Names	Golgi phosphoprotein 2; Golgi membrane protein GP73; GOLPH2; bA379P1.3; Golgi membrane protein 1; C9orf155; PSEC0257; HEL46; GP73

Application Instructions

Application table	Application	Dilution
	IHC-P	2.5 µg/ml
	WB	0.25 - 0.5 µg/ml
Application Note	* The dilutions indicate recommended starting dilutions and the optimal dilutions or concentrations should be determined by the scientist.	
Positive Control	Rat Brain Tissue Lysate	

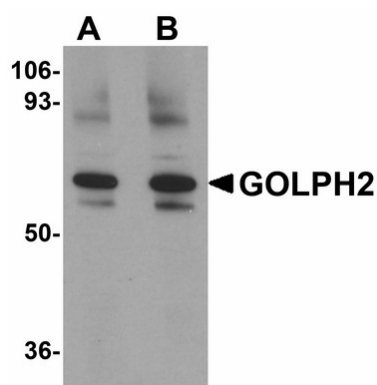
Properties

Form	Liquid
Purification	Affinity purification with immunogen.
Buffer	PBS and 0.02% Sodium azide
Preservative	0.02% Sodium azide
Concentration	1 mg/ml
Storage instruction	For continuous use, store undiluted antibody at 2-8°C for up to a week. For long-term storage, aliquot and store at -20°C or below. Storage in frost free freezers is not recommended. Avoid repeated freeze/thaw cycles. Suggest spin the vial prior to opening. The antibody solution should be gently mixed before use.

Bioinformation

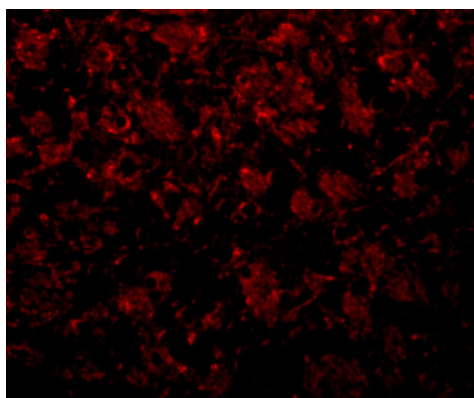
Gene Symbol	GOLM1
Gene Full Name	golgi membrane protein 1
Background	The Golgi complex plays a key role in the sorting and modification of proteins exported from the endoplasmic reticulum. The protein encoded by this gene is a type II Golgi transmembrane protein. It processes proteins synthesized in the rough endoplasmic reticulum and assists in the transport of protein cargo through the Golgi apparatus. The expression of this gene has been observed to be upregulated in response to viral infection. Alternatively spliced transcript variants encoding the same protein have been described for this gene. [provided by RefSeq, Sep 2009]
Function	Unknown. Cellular response protein to viral infection. [UniProt]
Research Area	Signaling Transduction antibody
Calculated Mw	45 kDa
PTM	Glycosylated. Phosphorylation sites are present in the extracellular medium.

Images



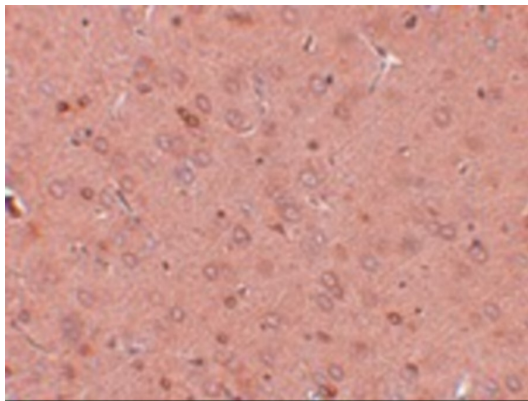
ARG55416 anti-GOLPH2 antibody WB image

Western blot: Rat brain tissue lysate stained with ARG55416 anti-GOLPH2 antibody at (A) 0.25 and (B) 0.5 µg/ml dilution.



ARG55416 anti-GOLPH2 antibody IHC image

Immunohistochemistry: Rat brain tissue stained with ARG55416 anti-GOLPH2 antibody at 20 µg/ml dilution.



ARG55416 anti-GOLPH2 antibody IHC image

Immunohistochemistry: Rat brain tissue stained with ARG55416 anti-GOLPH2 antibody at 2.5 µg/ml dilution.