

ARG55417 anti-KPNA6 antibody

Package: 50 µg
Store at: -20°C

Summary

Product Description	Rabbit Polyclonal antibody recognizes KPNA6
Tested Reactivity	Hu
Predict Reactivity	Ms, Rat
Tested Application	ICC/IF, WB
Host	Rabbit
Clonality	Polyclonal
Isotype	IgG
Target Name	KPNA6
Species	Human
Immunogen	Synthetic peptide (13 aa) within aa. 70-120 of Human KPNA6.
Conjugation	Un-conjugated
Alternate Names	KPNA7; Importin subunit alpha-7; IPOA7; Karyopherin subunit alpha-6

Application Instructions

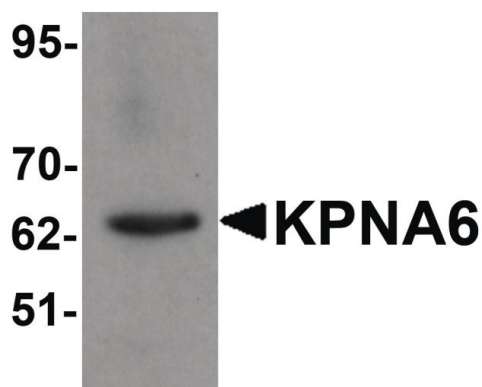
Application table	Application	Dilution
	ICC/IF	20 µg/ml
	WB	1 µg/ml
Application Note	* The dilutions indicate recommended starting dilutions and the optimal dilutions or concentrations should be determined by the scientist.	
Positive Control	293 Cell Lysate	

Properties

Form	Liquid
Purification	Affinity purification with immunogen.
Buffer	PBS and 0.02% Sodium azide
Preservative	0.02% Sodium azide
Concentration	1 mg/ml
Storage instruction	For continuous use, store undiluted antibody at 2-8°C for up to a week. For long-term storage, aliquot and store at -20°C or below. Storage in frost free freezers is not recommended. Avoid repeated freeze/thaw cycles. Suggest spin the vial prior to opening. The antibody solution should be gently mixed before use.
Note	For laboratory research only, not for drug, diagnostic or other use.

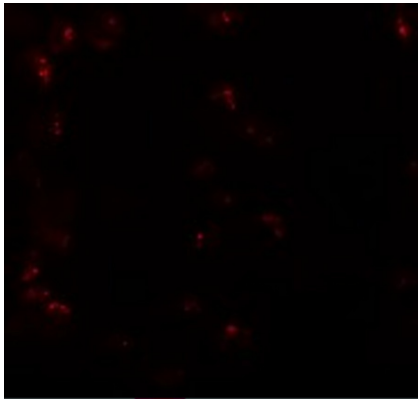
Database links	GeneID: 23633 Human Swiss-port # O60684 Human
Gene Symbol	KPNA6
Gene Full Name	karyopherin alpha 6 (importin alpha 7)
Background	Nucleocytoplasmic transport, a signal- and energy-dependent process, takes place through nuclear pore complexes embedded in the nuclear envelope. The import of proteins containing a nuclear localization signal (NLS) requires the NLS import receptor, a heterodimer of importin alpha and beta subunits also known as karyopherins. Importin alpha binds the NLS-containing cargo in the cytoplasm and importin beta docks the complex at the cytoplasmic side of the nuclear pore complex. In the presence of nucleoside triphosphates and the small GTP binding protein Ran, the complex moves into the nuclear pore complex and the importin subunits dissociate. Importin alpha enters the nucleoplasm with its passenger protein and importin beta remains at the pore. The protein encoded by this gene is a member of the importin alpha family. [provided by RefSeq, Jul 2008]
Function	Functions in nuclear protein import as an adapter protein for nuclear receptor KPNB1. Binds specifically and directly to substrates containing either a simple or bipartite NLS motif. Docking of the importin/substrate complex to the nuclear pore complex (NPC) is mediated by KPNB1 through binding to nucleoporin FxFG repeats and the complex is subsequently translocated through the pore by an energy requiring, Ran-dependent mechanism. At the nucleoplasmic side of the NPC, Ran binds to importin-beta and the three components separate and importin-alpha and -beta are re-exported from the nucleus to the cytoplasm where GTP hydrolysis releases Ran from importin. The directionality of nuclear import is thought to be conferred by an asymmetric distribution of the GTP- and GDP-bound forms of Ran between the cytoplasm and nucleus. [UniProt]
Research Area	Signaling Transduction antibody
Calculated Mw	60 kDa

Images



ARG55417 anti-KPNA6 antibody WB image

Western blot: 293 cell lysate stained with ARG55417 anti-KPNA6 antibody at 1 µg/ml dilution.



ARG55417 anti-KPNA6 antibody ICC/IF image

Immunofluorescence: 293 cells stained with ARG55417 anti-KPNA6 antibody at 20 µg/ml dilution.