

ARG55422 anti-CBX8 antibody

Package: 100 µl
Store at: -20°C

Summary

Product Description	Mouse Monoclonal antibody recognizes CBX8
Tested Reactivity	Hu
Tested Application	FACS, WB
Host	Mouse
Clonality	Monoclonal
Clone	1214CT171.154.107
Isotype	IgG1
Target Name	CBX8
Species	Human
Immunogen	KLH-conjugated synthetic peptide around the C-terminal region of Human CBX8.
Conjugation	Un-conjugated
Alternate Names	hPc3; PC3; Chromobox protein homolog 8; RC1; Pc3; Polycomb 3 homolog; Rectachrome 1

Application Instructions

Application table	Application	Dilution
	FACS	1:25
	WB	1:1000
Application Note	* The dilutions indicate recommended starting dilutions and the optimal dilutions or concentrations should be determined by the scientist.	
Positive Control	293	

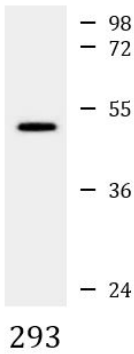
Properties

Form	Liquid
Purification	Purification with Protein G.
Buffer	PBS and 0.09% (W/V) Sodium azide
Preservative	0.09% (W/V) Sodium azide
Storage instruction	For continuous use, store undiluted antibody at 2-8°C for up to a week. For long-term storage, aliquot and store at -20°C or below. Storage in frost free freezers is not recommended. Avoid repeated freeze/thaw cycles. Suggest spin the vial prior to opening. The antibody solution should be gently mixed before use.
Note	For laboratory research only, not for drug, diagnostic or other use.

Bioinformation

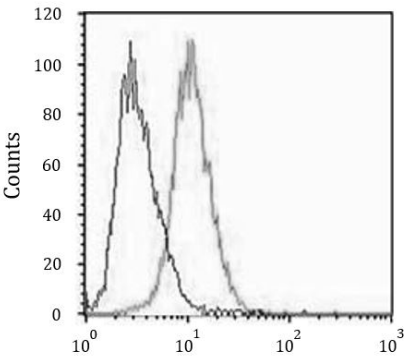
Database links	GeneID: 57332 Human Swiss-port # Q9HC52 Human
Gene Symbol	CBX8
Gene Full Name	chromobox homolog 8
Function	Component of a Polycomb group (PcG) multiprotein PRC1-like complex, a complex class required to maintain the transcriptionally repressive state of many genes, including Hox genes, throughout development. PcG PRC1 complex acts via chromatin remodeling and modification of histones; it mediates monoubiquitination of histone H2A 'Lys-119', rendering chromatin heritably changed in its expressibility. [UniProt]
Research Area	Gene Regulation antibody
Calculated Mw	43 kDa
Cellular Localization	Nucleus.

Images



ARG55422 anti-CBX8 antibody WB image

Western blot: 35 µg of 293 cell lysate stained with ARG55422 anti-CBX8 antibody at 1:1000 dilution.



ARG55422 anti-CBX8 antibody FACS image

Flow Cytometry: A549 cells stained with ARG55422 anti-CBX8 antibody (right histogram) at 1:25 dilution or isotype control antibody (left histogram), followed by incubation with Alexa Fluor® 488 labelled secondary antibody.