

## ARG55426 anti-IGF2BP2 antibody

Package: 100 µl  
Store at: -20°C

### Summary

Product Description	Rabbit Polyclonal antibody recognizes IGF2BP2
Tested Reactivity	Hu
Predict Reactivity	Ms
Tested Application	FACS, WB
Host	Rabbit
Clonality	Polyclonal
Isotype	IgG
Target Name	IGF2BP2
Species	Human
Immunogen	KLH-conjugated synthetic peptide corresponding to aa. 530-556 (C-terminus) of Human IGF2BP2.
Conjugation	Un-conjugated
Alternate Names	IMP2; VICKZ2; Hepatocellular carcinoma autoantigen p62; IMP-2; VICKZ family member 2; IGF2 mRNA-binding protein 2; IGF-II mRNA-binding protein 2; Insulin-like growth factor 2 mRNA-binding protein 2

### Application Instructions

Application table	Application	Dilution
	FACS	1:10 - 1:50
	WB	1:1000
Application Note	* The dilutions indicate recommended starting dilutions and the optimal dilutions or concentrations should be determined by the scientist.	
Positive Control	HepG2	

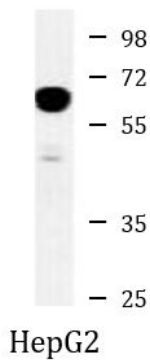
### Properties

Form	Liquid
Purification	Purification with Protein A and immunogen peptide.
Buffer	PBS and 0.09% (W/V) Sodium azide
Preservative	0.09% (W/V) Sodium azide
Storage instruction	For continuous use, store undiluted antibody at 2-8°C for up to a week. For long-term storage, aliquot and store at -20°C or below. Storage in frost free freezers is not recommended. Avoid repeated freeze/thaw cycles. Suggest spin the vial prior to opening. The antibody solution should be gently mixed before use.
Note	For laboratory research only, not for drug, diagnostic or other use.

## Bioinformation

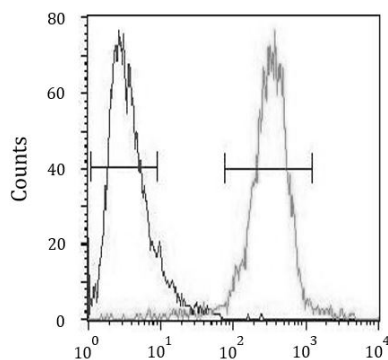
Database links	<a href="#">GeneID: 10644 Human</a> <a href="#">Swiss-port # Q9Y6M1 Human</a>
Gene Symbol	IGF2BP2
Gene Full Name	insulin-like growth factor 2 mRNA binding protein 2
Background	This gene encodes a member of the IGF-II mRNA-binding protein (IMP) family. The protein encoded by this gene contains four KH domains and two RRM domains. It functions by binding to the 5' UTR of the insulin-like growth factor 2 (IGF2) mRNA and regulating IGF2 translation. Alternative promoter usage and alternate splicing result in multiple variants encoding different isoforms. [provided by RefSeq, May 2014]
Function	RNA-binding factor that recruits target transcripts to cytoplasmic protein-RNA complexes (mRNPs). This transcript 'caging' into mRNPs allows mRNA transport and transient storage. It also modulates the rate and location at which target transcripts encounter the translational apparatus and shields them from endonuclease attacks or microRNA-mediated degradation (By similarity). Binds to the 5'-UTR of the insulin-like growth factor 2 (IGF2) mRNAs. Binding is isoform-specific. Binds to beta-actin/ACTB and MYC transcripts. [UniProt]
Research Area	Gene Regulation antibody; Immune System antibody; Metabolism antibody; Signaling Transduction antibody
Calculated Mw	66 kDa
Cellular Localization	Nucleus. Cytoplasm. Note=Localized in cytoplasmic mRNP granules containing untranslated mRNAs. Localizes at the connecting piece and the tail of the spermatozoa. In response to cellular stress, such as oxidative stress, recruited to stress granules

## Images



ARG55426 anti-IGF2BP2 antibody WB image

Western blot: 35 µg of HepG2 cell lysate stained with ARG55426 anti-IGF2BP2 antibody.



ARG55426 anti-IGF2BP2 antibody FACS image

Flow Cytometry: HepG2 cells stained with ARG55426 anti-IGF2BP2 antibody (right histogram) or without primary antibody control (left histogram), followed by incubation with FITC labelled secondary antibody.