

ARG55438 anti-Aldolase antibody

Package: 100 µl
Store at: -20°C

Summary

Product Description	Rabbit Polyclonal antibody recognizes Aldolase
Tested Reactivity	Hu, Ms, Rat
Predict Reactivity	Rb
Tested Application	ICC/IF, IHC-P, WB
Host	Rabbit
Clonality	Polyclonal
Isotype	IgG
Target Name	Aldolase
Species	Human
Immunogen	KLH-conjugated synthetic peptide corresponding to aa. 66-95 (N-terminus) of Human Aldolase.
Conjugation	Un-conjugated
Alternate Names	Lung cancer antigen NY-LU-1; HEL-S-87p; GSD12; Fructose-bisphosphate aldolase A; Muscle-type aldolase; EC 4.1.2.13; ALDA

Application Instructions

Application table	Application	Dilution
	ICC/IF	1:10 - 1:50
	IHC-P	1:10 - 1:50
	WB	1:1000
Application Note	* The dilutions indicate recommended starting dilutions and the optimal dilutions or concentrations should be determined by the scientist.	
Positive Control	293	

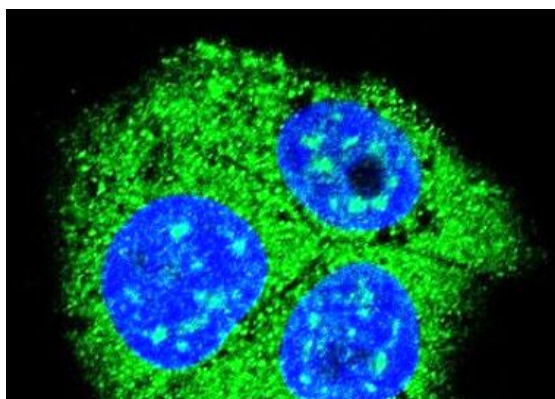
Properties

Form	Liquid
Purification	This antibody is prepared by Saturated Ammonium Sulfate (SAS) precipitation followed by dialysis against PBS.
Buffer	PBS and 0.09% (W/V) Sodium azide
Preservative	0.09% (W/V) Sodium azide
Storage instruction	For continuous use, store undiluted antibody at 2-8°C for up to a week. For long-term storage, aliquot and store at -20°C or below. Storage in frost free freezers is not recommended. Avoid repeated freeze/thaw cycles. Suggest spin the vial prior to opening. The antibody solution should be gently mixed before use.

Bioinformation

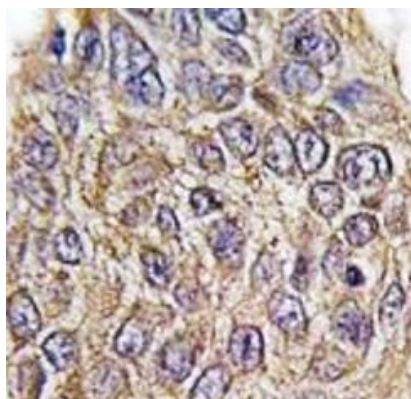
Gene Symbol	ALDOA
Gene Full Name	aldolase A, fructose-bisphosphate
Background	The protein encoded by this gene, Aldolase A (fructose-bisphosphate aldolase), is a glycolytic enzyme that catalyzes the reversible conversion of fructose-1,6-bisphosphate to glyceraldehyde 3-phosphate and dihydroxyacetone phosphate. Three aldolase isozymes (A, B, and C), encoded by three different genes, are differentially expressed during development. Aldolase A is found in the developing embryo and is produced in even greater amounts in adult muscle. Aldolase A expression is repressed in adult liver, kidney and intestine and similar to aldolase C levels in brain and other nervous tissue. Aldolase A deficiency has been associated with myopathy and hemolytic anemia. Alternative splicing and alternative promoter usage results in multiple transcript variants. Related pseudogenes have been identified on chromosomes 3 and 10. [provided by RefSeq, Aug 2011]
Function	Plays a key role in glycolysis and gluconeogenesis. In addition, may also function as scaffolding protein (By similarity). [UniProt]
Research Area	Cancer antibody; Metabolism antibody; Signaling Transduction antibody
Calculated Mw	39 kDa
Cellular Localization	Cytoplasm, myofibril, sarcomere, I band. Cytoplasm, myofibril, sarcomere, M line. Note=In skeletal muscle, accumulates around the M line and within the I band, colocalizing with FBP2 on both sides of the Z line in the absence of Ca(2+)

Images



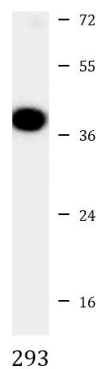
ARG55438 anti-Aldolase antibody ICC/IF image

Immunofluorescence: HepG2 cells stained with ARG55438 anti-Aldolase antibody (green). DAPI (blue) for nuclear staining.



ARG55438 anti-Aldolase antibody IHC-P image

Immunohistochemistry: Formalin-fixed and paraffin-embedded Human lung carcinoma tissue stained with ARG55438 anti-Aldolase antibody.



ARG55438 anti-Aldolase antibody WB image

Western blot: 35 µg of 293 cell lysate stained with ARG55438 anti-Aldolase antibody at 1:1000 dilution.