

ARG55449 anti-PEBP1 / RKIP antibody

Package: 100 µl
Store at: -20°C

Summary

Product Description	Rabbit Polyclonal antibody recognizes PEBP1 / RKIP
Tested Reactivity	Hu, Ms
Tested Application	IHC-P, WB
Host	Rabbit
Clonality	Polyclonal
Isotype	IgG
Target Name	PEBP1 / RKIP
Species	Human
Immunogen	KLH-conjugated synthetic peptide corresponding to aa. 137-167 (Center) of Human PEBP1 / RKIP.
Conjugation	Un-conjugated
Alternate Names	PEBP; PBP; HCNP; HEL-S-34; RKIP; Prostatic-binding protein; HCNPpp; Phosphatidylethanolamine-binding protein 1; Raf kinase inhibitor protein; Neuropolypeptide h3; HEL-210; PEBP-1

Application Instructions

Application table	Application	Dilution
	IHC-P	1:50 - 1:100
	WB	1:1000
Application Note	* The dilutions indicate recommended starting dilutions and the optimal dilutions or concentrations should be determined by the scientist.	
Positive Control	293	

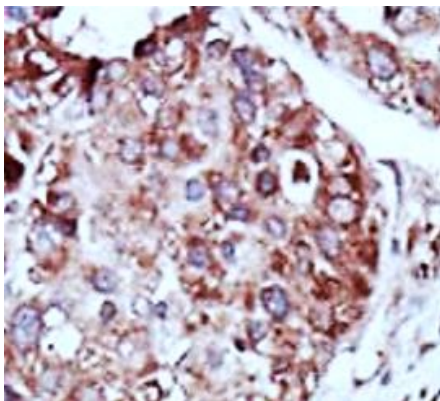
Properties

Form	Liquid
Purification	Purification with Protein G.
Buffer	PBS and 0.09% (W/V) Sodium azide
Preservative	0.09% (W/V) Sodium azide
Storage instruction	For continuous use, store undiluted antibody at 2-8°C for up to a week. For long-term storage, aliquot and store at -20°C or below. Storage in frost free freezers is not recommended. Avoid repeated freeze/thaw cycles. Suggest spin the vial prior to opening. The antibody solution should be gently mixed before use.
Note	For laboratory research only, not for drug, diagnostic or other use.

Bioinformation

Database links	GeneID: 23980 Mouse GeneID: 5037 Human Swiss-port # P30086 Human Swiss-port # P70296 Mouse
Gene Symbol	PEBP1
Gene Full Name	phosphatidylethanolamine binding protein 1
Background	This gene encodes a member of the phosphatidylethanolamine-binding family of proteins and has been shown to modulate multiple signaling pathways, including the MAP kinase (MAPK), NF-kappa B, and glycogen synthase kinase-3 (GSK-3) signaling pathways. The encoded protein can be further processed to form a smaller cleavage product, hippocampal cholinergic neurostimulating peptide (HCNP), which may be involved in neural development. This gene has been implicated in numerous human cancers and may act as a metastasis suppressor gene. Multiple pseudogenes of this gene have been identified in the genome. [provided by RefSeq, Jul 2015]
Function	<p>Binds ATP, opioids and phosphatidylethanolamine. Has lower affinity for phosphatidylinositol and phosphatidylcholine. Serine protease inhibitor which inhibits thrombin, neuropsin and chymotrypsin but not trypsin, tissue type plasminogen activator and elastase (By similarity). Inhibits the kinase activity of RAF1 by inhibiting its activation and by dissociating the RAF1/MEK complex and acting as a competitive inhibitor of MEK phosphorylation.</p> <p>HCNP may be involved in the function of the presynaptic cholinergic neurons of the central nervous system. HCNP increases the production of choline acetyltransferase but not acetylcholinesterase. Seems to be mediated by a specific receptor (By similarity). [UniProt]</p>
Research Area	Cancer antibody; Cell Biology and Cellular Response antibody; Gene Regulation antibody; Neuroscience antibody
Calculated Mw	21 kDa
Cellular Localization	Cytoplasm.

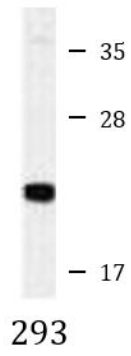
Images



ARG55449 anti-PEBP1 / RKIP antibody IHC-P image

Immunohistochemistry: Formalin-fixed and paraffin-embedded Human cancer tissue stained with ARG55449 anti-PEBP1 / RKIP antibody.

ARG55449 anti-PEBP1 / RKIP antibody WB image



Western blot: 35 µg of 293 cell lysate stained with ARG55449 anti-PEBP1 / RKIP antibody.