

ARG55451 anti-CARD6 antibody

Package: 100 µl
Store at: -20°C

Summary

| | |
|---------------------|---|
| Product Description | Rabbit Polyclonal antibody recognizes CARD6 |
| Tested Reactivity | Hu |
| Tested Application | IHC-P, WB |
| Host | Rabbit |
| Clonality | Polyclonal |
| Isotype | IgG |
| Target Name | CARD6 |
| Species | Human |
| Immunogen | KLH-conjugated synthetic peptide around the center region of Human CARD6. |
| Conjugation | Un-conjugated |
| Alternate Names | Caspase recruitment domain-containing protein 6; CINCIN1 |

Application Instructions

| | | |
|-------------------|--|----------|
| Application table | Application | Dilution |
| | IHC-P | 1:25 |
| | WB | 1:1000 |
| Application Note | * The dilutions indicate recommended starting dilutions and the optimal dilutions or concentrations should be determined by the scientist. | |
| Positive Control | A549 | |

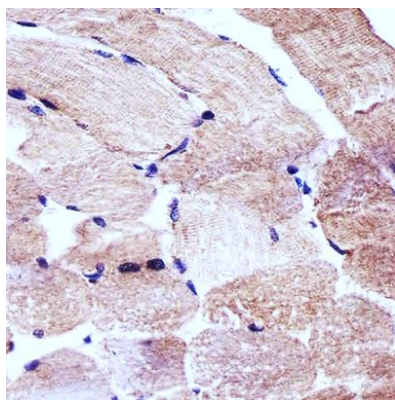
Properties

| | |
|---------------------|--|
| Form | Liquid |
| Purification | Purification with Protein A and immunogen peptide. |
| Buffer | PBS and 0.09% (W/V) Sodium azide |
| Preservative | 0.09% (W/V) Sodium azide |
| Storage instruction | For continuous use, store undiluted antibody at 2-8°C for up to a week. For long-term storage, aliquot and store at -20°C or below. Storage in frost free freezers is not recommended. Avoid repeated freeze/thaw cycles. Suggest spin the vial prior to opening. The antibody solution should be gently mixed before use. |
| Note | For laboratory research only, not for drug, diagnostic or other use. |

Bioinformation

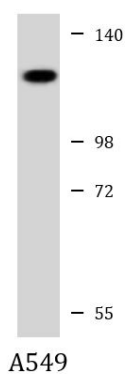
| | |
|----------------|--|
| Database links | GeneID: 84674 Human Swiss-port # Q9BX69 Human |
| Gene Symbol | CARD6 |
| Gene Full Name | caspase recruitment domain family, member 6 |
| Background | This gene encodes a protein that contains a caspase recruitment domain (CARD), an antiparallel six-helical bundle that mediates homotypic protein-protein interactions. The encoded protein is a microtubule-associated protein that has been shown to interact with receptor-interacting protein kinases and positively modulate signal transduction pathways converging on activation of the inducible transcription factor NF- κ B. [provided by RefSeq, Jul 2008] |
| Function | May be involved in apoptosis. [UniProt] |
| Research Area | Cell Biology and Cellular Response antibody; Cell Death antibody |
| Calculated Mw | 116 kDa |

Images



ARG55451 anti-CARD6 antibody IHC-P image

Immunohistochemistry: Paraffin-embedded Human skeletal muscle section stained with ARG55451 anti-CARD6 antibody at 1:25 dilution.



ARG55451 anti-CARD6 antibody WB image

Western blot: 20 μ g of A549 cell lysate stained with ARG55451 anti-CARD6 antibody at 1:1000 dilution.