

ARG55452 anti-BCAP31 / BAP31 antibody

Package: 100 µl
Store at: -20°C

Summary

Product Description	Rabbit Polyclonal antibody recognizes BCAP31 / BAP31
Tested Reactivity	Hu
Tested Application	IHC-P, WB
Host	Rabbit
Clonality	Polyclonal
Isotype	IgG
Target Name	BCAP31 / BAP31
Species	Human
Immunogen	KLH-conjugated synthetic peptide corresponding to aa. 120-147 (Center) of Human BCAP31.
Conjugation	Un-conjugated
Alternate Names	BAP31; Bap31; 6C6-AG; DXS1357E; CDM; BCR-associated protein 31; 6C6-AG tumor-associated antigen; p28; Protein CDM; B-cell receptor-associated protein 31; DDCH

Application Instructions

Application table	Application	Dilution
	IHC-P	1:25
	WB	1:1000
Application Note	* The dilutions indicate recommended starting dilutions and the optimal dilutions or concentrations should be determined by the scientist.	
Positive Control	MDA-MB-453	

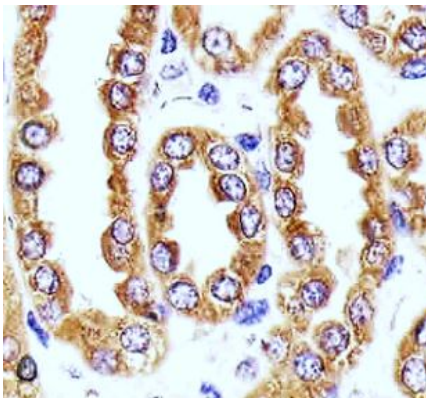
Properties

Form	Liquid
Purification	Purification with Protein A and immunogen peptide.
Buffer	PBS and 0.09% (W/V) Sodium azide
Preservative	0.09% (W/V) Sodium azide
Storage instruction	For continuous use, store undiluted antibody at 2-8°C for up to a week. For long-term storage, aliquot and store at -20°C or below. Storage in frost free freezers is not recommended. Avoid repeated freeze/thaw cycles. Suggest spin the vial prior to opening. The antibody solution should be gently mixed before use.
Note	For laboratory research only, not for drug, diagnostic or other use.

Bioinformation

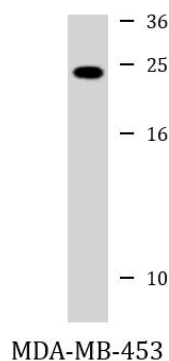
Database links	GeneID: 10134 Human Swiss-port # P51572 Human
Gene Symbol	BCAP31
Gene Full Name	B-cell receptor-associated protein 31
Background	This gene encodes a member of the B-cell receptor associated protein 31 superfamily. The encoded protein is a multi-pass transmembrane protein of the endoplasmic reticulum that is involved in the anterograde transport of membrane proteins from the endoplasmic reticulum to the Golgi and in caspase 8-mediated apoptosis. Microdeletions in this gene are associated with contiguous ABCD1/DXS1375E deletion syndrome (CADD5), a neonatal disorder. Alternative splicing of this gene results in multiple transcript variants. Two related pseudogenes have been identified on chromosome 16. [provided by RefSeq, Jan 2012]
Function	Functions as a chaperone protein. Is one of the most abundant endoplasmic reticulum (ER) proteins. Plays a role in the export of secreted proteins in the ER, the recognition of abnormally folded protein and their targeting to the ER associated-degradation (ERAD). Also serves as a cargo receptor for the export of transmembrane proteins. May be involved in CASP8-mediated apoptosis. [UniProt]
Research Area	Cell Biology and Cellular Response antibody; Cell Death antibody
Calculated Mw	28 kDa
PTM	Cleaved by CASP8 and other caspases.
Cellular Localization	Endoplasmic reticulum membrane; Multi-pass membrane protein. Endoplasmic reticulum-Golgi intermediate compartment membrane; Multi-pass membrane protein. Note=May shuttle between the ER and the intermediate compartment/cis-Golgi complex

Images



ARG55452 anti-BCAP31 / BAP31 antibody IHC-P image

Immunohistochemistry: Paraffin-embedded Human kidney section stained with ARG55452 anti-BCAP31 / BAP31 antibody at 1:25 dilution.



ARG55452 anti-BCAP31 / BAP31 antibody WB image

Western blot: 35 µg of MDA-MB-453 cell lysate stained with ARG55452 anti-BCAP31 / BAP31 antibody.